

36CH / 64CH HD NVR SERIES

QUICK START

Please read instructions thoroughly before operation and retain it for future reference. For the actual display & operation, please refer to your device in hand.

To check the complete user manual, scan the QR code on the right, or go to the site: www.surveillance-download.com/user/h364.swf

To get the free PC CMS software (CMS Lite), check the supplied CD or go to the site: www.surveillance-download.com/user/h364.swf

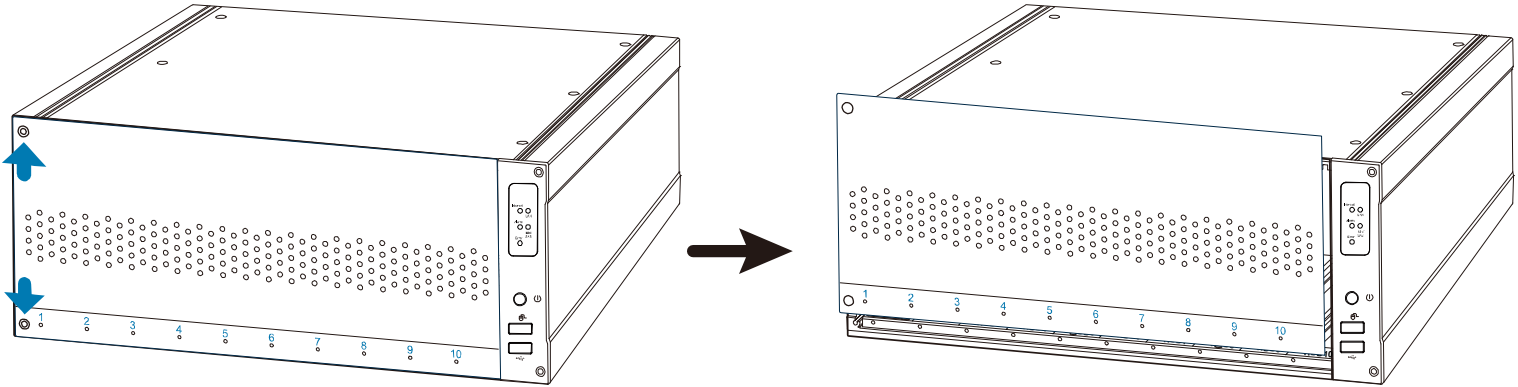


CONNECTION

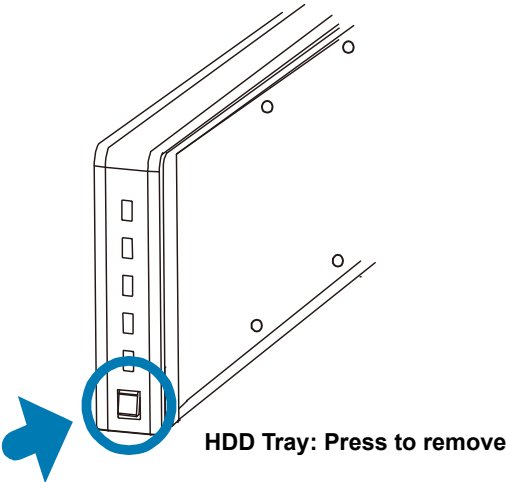
Hard Disk Installation

Note: It's necessary to install a hard disk first before firmware upgrade to ensure the upgrade process works properly.

Step1: Remove the cover by loosening the left side of the cover's screws.

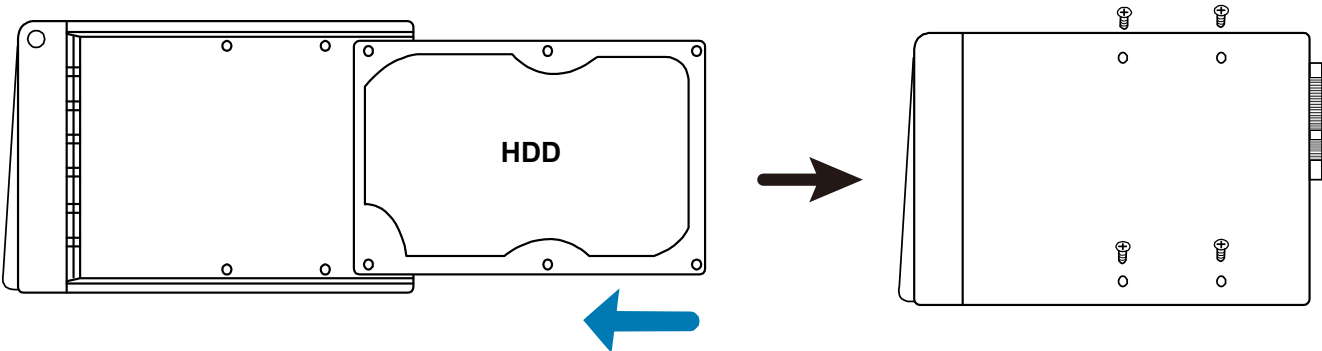


Step2: Find the hard disk connector and HDD tray in the device. Press the button of the HDD tray as indicated below and remove it.



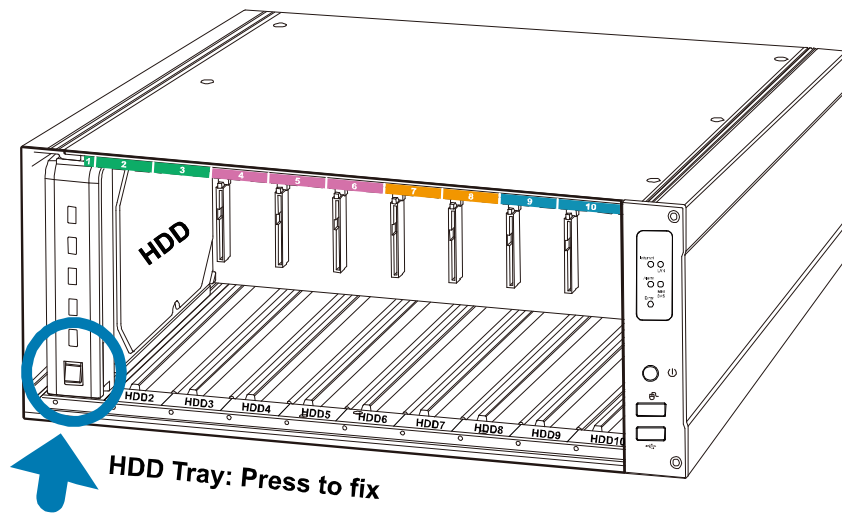
Step3: Get a compatible hard disk. With the PCB side facing the internal of the HDD tray and the hard disk's connector facing the outside.

Then, find the HDD screws supplied in the sales package. Align the hard disk's screw holes with the HDD tray's holes and fasten the screws.



Step4: Place the HDD tray to the device, and push it to the end till you feel the hard disk is inserted to the hard disk connector.

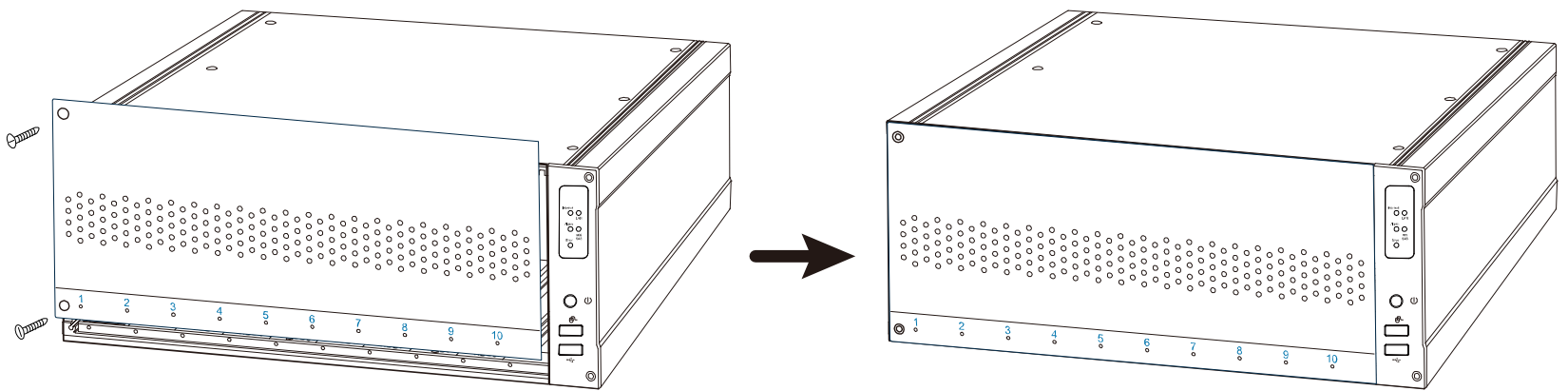
Then, lock the HDD tray as shown below.



You'll see 4 different colors of labels on the drive bays. They're corresponding to the drive bays of AVX993 (the disk array), and each color will have five drive bays in total when AVX993 is connected to this NVR.

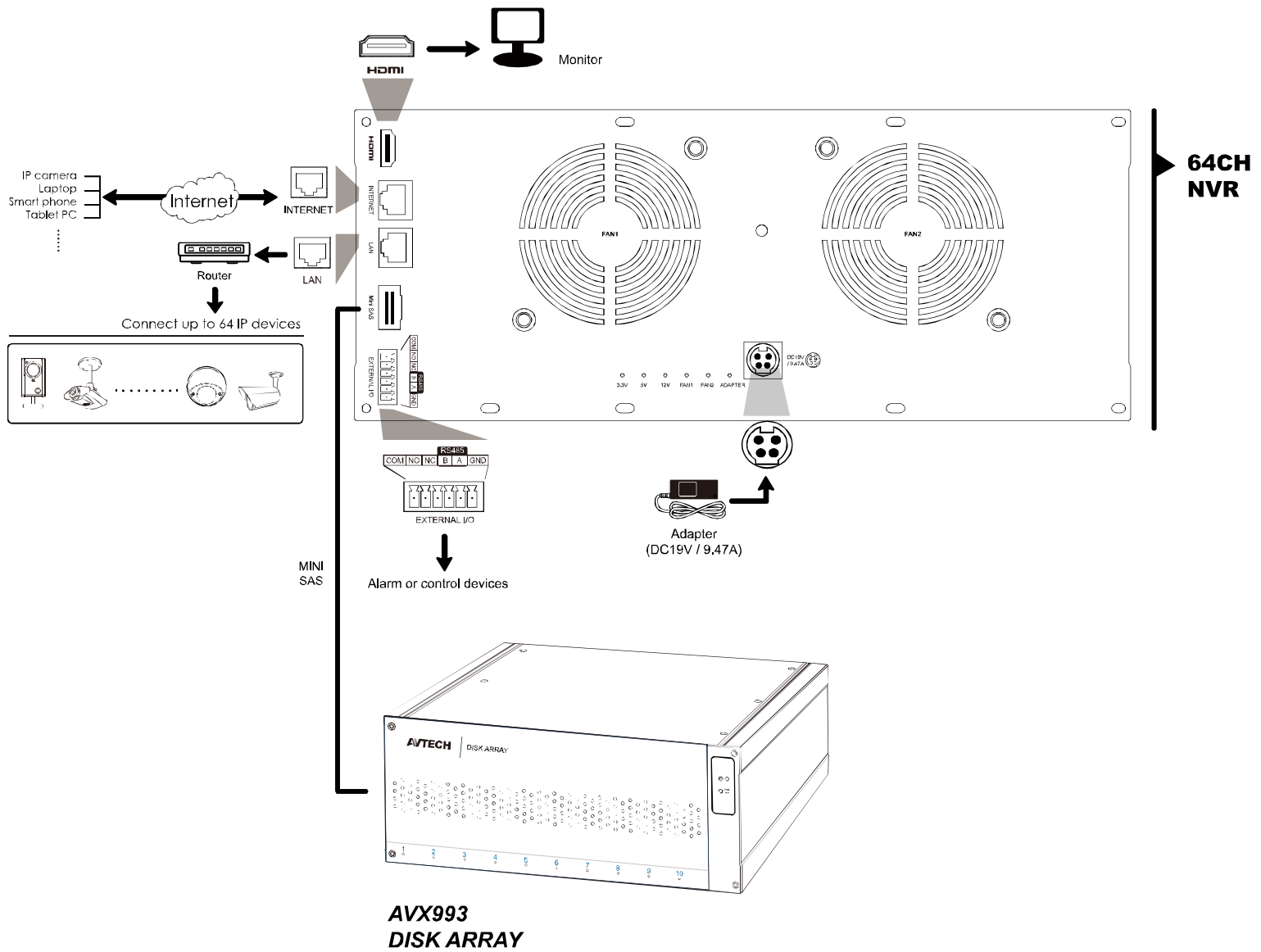
GROUP	HDD COLOR LABEL	HDD NUMBERING	
		NVR	AVX993
1	Blue	1 ~ 3	9 ~ 10
2	Orange	4 ~ 6	7 ~ 8
3	Pink	7 ~ 8	4 ~ 6
4	Green	9 ~ 10	1 ~ 3

Step6: Replace the front cover and fasten the screws you loosened in Step1.



Connection

Connect a monitor, IP cameras, adapters, a mouse, and other devices necessary to this recorder as illustrated below.



Then, power on the whole system and wait till the system initialization is done.

Note: When AVX993, the disk array, is connected to this NVR, please power on AVX993 first. Otherwise, the NVR might not detect AVX993 properly.

Wait till the HDD indicators turn green.

Camera IP Configurations by LAN

Auto mode is to simplify the complicated network settings within three minutes. The connection mode of the LAN port is **AUTO** by default. This mode is suitable when the LAN port of the device is connected to a hub.

Note: SETTING Path:  (ADVANCED CONFIG) → NETWORK → LAN → MODE.

Note: For access this recorder remotely with your mobile device or laptop, you need to connect this recorder to Internet. For details, please get the setup manual from the supplied CD or from www.surveillance-download.com/user/network_setup/network_setup_recorder.pdf.


The device will automatically configure the IP address of a camera connected by LAN if:

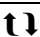
- The connected IP camera is our brand's IP camera.
- Reset the IP camera to default value (the default IP configuration method of the camera is **DHCP**).
- The camera is powered on before the device is powered on.

If the device **doesn't** configure the IP address of your camera automatically as described above, your IP camera might **NOT** be:

- Our brand's IP camera.
- Set to **DHCP** as its default IP configuration method.

To solve this, use our brand's IP camera, and reconfigure its IP address to 10.1.1.xx (xx ranges from 11 ~ 253), in the same network segment as the device.

- a) Move your mouse to the left side of the screen to show the quick bar, and select . You'll see the list of every connected IP camera with its connection status to this device and MAC address.
- b) Select the IP address which is not used, and select **SETUP**.

IP SEARCH						
IP	PORT	MAC	TYPE	PROTOCOL	STATUS	
10.1.1.12	88	00:0e:53:e5:9a:f1	IP CAMERA	AVTECH	CONNECTED TO CH1	
10.1.1.12	88	UNKNOWN	IP CAMERA	ONVIF	CONNECTED TO CH1	
10.1.1.13	88	00:0e:53:a6:91:18	IP CAMERA	AVTECH	CONNECTED TO CH2	
10.1.1.13	88	UNKNOWN	IP CAMERA	ONVIF	CONNECTED TO CH2	
10.1.2.14	88	00:0e:53:a5:9f:a2	SWITCH	AVTECH	UNUSED	
10.1.2.14	88	00:0e:53:a5:9f:a2	SWITCH	AVTECH	UNUSED	
10.1.1.15	88	00:0e:53:e1:4e:k5	IP CAMERA	AVTECH	CONNECTED TO CH3	
10.1.1.15	88	UNKNOWN	IP CAMERA	ONVIF	CONNECTED TO CH3	
10.1.1.16	88	00:0e:53:s5:3e:h6	IP CAMERA	AVTECH	CONNECTED TO CH4	
10.1.1.16	88	UNKNOWN	IP CAMERA	ONVIF	CONNECTED TO CH4	
10.1.1.17	88	00:0e:53:e6:4b:26	IP CAMERA	AVTECH	CONNECTED TO CH5	
10.1.1.17	88	UNKNOWN	IP CAMERA	ONVIF	CONNECTED TO CH5	
<div style="display: flex; justify-content: space-between; align-items: center;">  CONNECT SETUP EXIT </div>						

- c) Select **DHCP** in **NETWORK TYPE**.

d) Click **APPLY** and **EXIT** to save your changes.

SETUP	
NETWORK TYPE	DHCP
IP	10.1.1.14
PORT	88
USER NAME	admin
PASSWORD	*****
NETMASK	255.0.0.0
GATEWAY	10.1.1.10
PRIMARY DNS	168.95.1.1
<input type="button" value="APPLY"/> <input type="button" value="EXIT"/>	

e) The device will then detect the IP camera and display images soon.

Manual Connection Setup

Note: SETTING Path:  (ADVANCED CONFIG) → CONNECTION.

To manually assign the address of your camera connected locally, click **URI** to modify.

ADVANCED CONFIG			
CONNECTION	CHANNEL	URI	CONFIG
CAMERA	CH1	AVTECH://ip_office.ddns.eagleeyes.tw:80	SETUP
DETECTION	CH2	ONVIF://10.1.1.14:88	SETUP
ALERT	CH3	AVTECH://10.1.1.30:88	SETUP
NETWORK	CH4	AVTECH://10.1.1.12:88	SETUP
DISPLAY			
RECORD			
NOTIFY			
PSE			
MULTICASTING			
<input type="button" value="EXIT"/>			

Note: To configure this recorder to access other IP camera connected remotely for live viewing or video backup, you need to connect this recorder to Internet first. For details, please get the setup manual from the supplied CD or from www.surveillance-download.com/user/network_setup/network_setup_recorder.pdf.


CHANGE USER NAME AND PASSWORD

It's highly recommended to change the user name and password of this device to keep your account safe. Otherwise, any person could access this device if he knows the default user name and password.

If you didn't go through the setting wizard at the first place, you'll be prompted to change the user name and password:

WARNING	
PLEASE BE ADVISED TO MODIFY THE DEFAULT ACCOUNT TO ENSURE YOUR INFORMATION SECURITY.	
<input checked="" type="radio"/> MODIFY	
<input type="radio"/> REMIND ME LATER	
<input type="radio"/> DON'T REMIND ME ANYMORE	
<input type="button" value="CONFIRM"/>	

Choose **MODIFY** to start the change immediately.

To change later, right click to show the main menu, and select  (SYSTEM) → **ACCOUNT** to change the default user name and password of SUPERVISOR.

SYSTEM			
ACCOUNT			
TOOLS			
SYSTEM INFO			
BACKUP SCHEDULE			
ONLINE			
USER LIST			
USER NAME		LEVEL	
admin		SUPERVISOR	
EXIT		ADD	EDIT
		DEL	

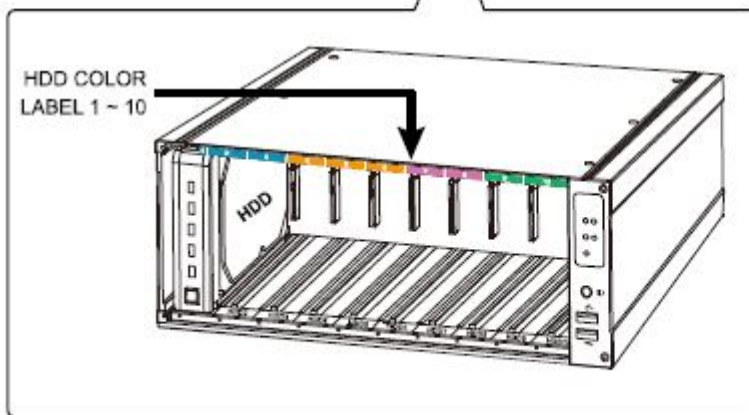
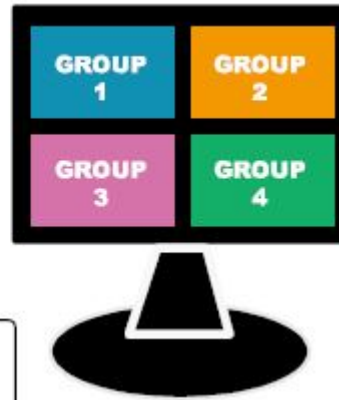
APPENDIX

Hardware Overview

This NVR has divided all channels into four groups for live display and recording, and videos in each group are recorded to specific hard disks as indicated below. The first two groups have three hard disks to record, and the last two groups have two hard disks to record.

If such storage allocation is not sufficient, AVX993, the disk array, could be used to connect to this NVR to expand the storage of each group to five hard disks, as indicated below.

GROUP	HDD COLOR LABEL	HDD NUMBERING	
		NVR	AVX993
1	Blue	1 ~ 3	9 ~ 10
2	Orange	4 ~ 6	7 ~ 8
3	Pink	7 ~ 8	4 ~ 6
4	Green	9 ~ 10	1 ~ 3



For Using

To control this NVR, you need to first access the group within which includes the control you want to make. To switch to one of the group:

