

Specification Comparison

Model	The latest version (CMS Lite 1.6.0.0)	Pervious Version
Live		
Total Live Display CH Number	24	16
Merge mode& Remote Independent (refer to b.)	Merge mode & Remote Independent	Remote Independent
Local Record		
Total Manual Record CH Number	16	16
Record mode	Manual / Event / Timer mode	Manual
Record Profile Select (refer to c.)	Y	Only Profile2
Backup		
Remote Backup (refer to d.)	4	1
Playback		
Remote Playback (refer to d.)	4	1
Architecture		
Device Compatibility	<ul style="list-style-type: none"> ■ 960H DVR ■ DG / AVT / AVZ DVR ■ AVH NVR 	<ul style="list-style-type: none"> ■ DG / AVT / AVZ DVR ■ AVH NVR
EaZy Networking Support (refer to e.)	Y	N

Live

a. Three new ways of display (6cut、8cut、24cut)



b. Merge 4CH or 16CH DVR / NVR video feeds (the Merge function)

Video Demonstration: <https://youtu.be/iumuBTyo9w8>

Application:

4CH or 16CH live feeds only occupy one live zone. There is a limitation of NVR / DVR online users at a time. (If the amount of online user is over the limitation, live view cannot be opened.) The limitation is designed for controlling the NVR / DVR Loading. To be noticed, the resolution of the merge mode is lower than that of remote independent.)

Local Record

c. Local record setting

- (1) Record Directory
Choose recording sector and create a new folder.
- (2) Overwrite
You can overwrite the selected recording sector.
- (3) Profile Select
Users can choose recording resolution in addition to D1/VGA. Dual stream recording is also available.

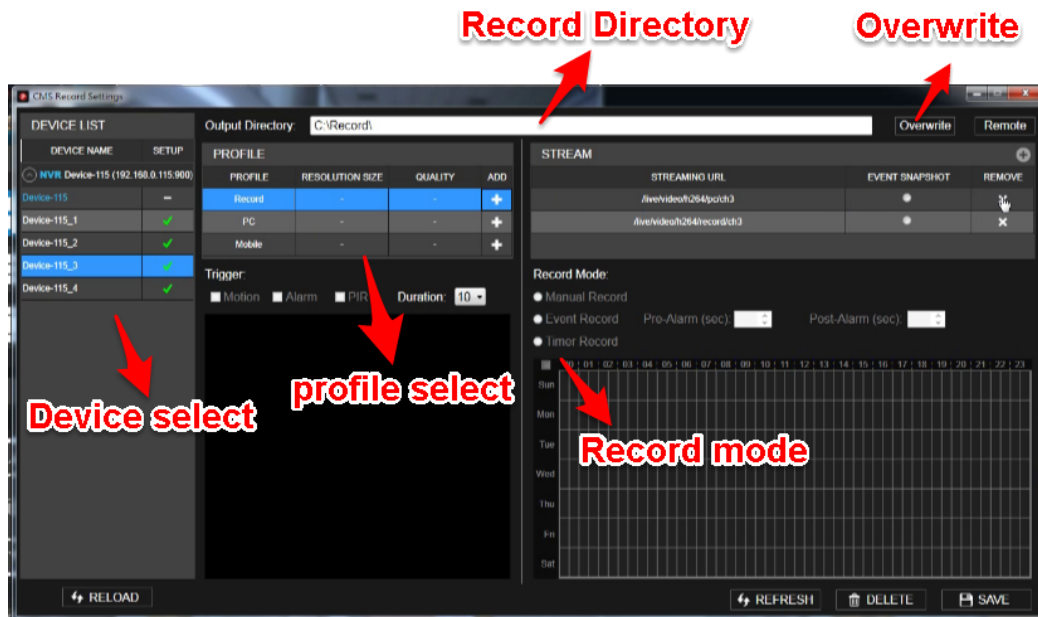
- (4) Record mode
Three modes available: Manual, Event, and Timer.

Example1:

Set Time Record to record from 8am to 5pm: profile2 (D1 resolution);
record from 5pm to 8am; profile1 (1080P resolution).

Example2:

Set Event Record to record before events happen: profile2 (D1 resolution);
record when events happen: (1080P resolution).



Remote backup

d. Backup on remote site

Video Demonstration: <https://youtu.be/riY8sJcDIq4>

Application:

Users are able to simultaneous backup multiple channels remotely and save each channel's video footage respectively.

Architecture

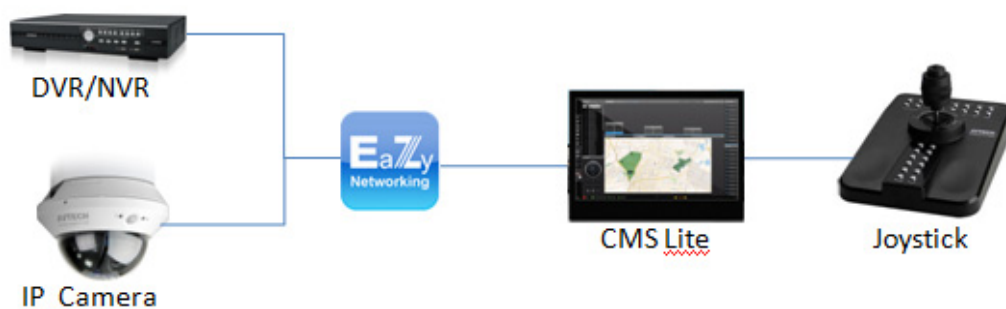
e. EaZy Networking device support

Register a cloud account on your mobile device (tablet PC or cell phone) and add a device which supports EaZy Networking. Then, log into the cloud service on CMS Lite to access devices added via EaZy Networking.

View video demonstration about Eagleeyes:

http://211.75.84.102/e_news/cloud_eazynetworking/eazynetworking.html

Application:



f. Speed up the display when the layout is changed

Video Demonstration: <https://youtu.be/f484vlctWGs>

Application:

Speed up the video display when the layout is changed.

g. CMS Lite will recall the last step when rebooting the system

Video Demonstration: <https://youtu.be/s5V4qXHJhFY>

Application:

This function saves users from resetting when rebooting CMS Lite.

h. Edit access information more quickly

Users can change the IP address or other access information more quickly.

The screenshot shows the 'Add Selected' form in the CMS Lite interface. The form includes the following fields:

- Device Name: Device
- IP Address: 192.168.0.120
- Port: 80
- Subnet Mask: 255.255.255.0
- Gateway: 192.168.0.1
- Account: admin
- Password: ••••

At the bottom of the form, there is a blue button with an IP icon and a plus sign. A red arrow points to this button with the text 'Devices IP Edit'.

Devices IP Edit