

### CMS Lite v.s. Video Viewer

Model	CMS Lite (V3.0)	Video Viewer (V0.2.1.4)
<b>Live</b>		
Maximum Layout Cuts (Check a.)	32	16
Merge mode & Remote Independent (Check b.)	Merge mode & Remote Independent	Merge mode
<b>Local Record</b>		
Total Manual Record CH Number	32	16
Record Limit	Background recording	Foreground recording
Record Profile Select and Mutli record (Check c.)	Y	Only Profile one (Stream one)
<b>Backup</b>		
Remote Backup (Check d.)	16	16
Support Backup Remote's Event (Check e.)	Y	Y
<b>Playback</b>		
Remote Playback (Check d.)	16	16
<b>Architecture</b>		
EaZy Networking Support (Check e.)	Y	N
User Permission Control (Check f.)	Y	N
Device Status (Check g.)	Y	N
EZUM Support (Check h.)	Y (CMS Lite V3.1)	N
EMAP (Check i.)	Y	N
Live & Playback DPTZ (Check j.)	1X~10X	N
<b>Connection Speed Comparison*</b>		
CPU Loading	Normal	20% higher than CMS Lite
Live Latency	Almost Real-time	2 sec.
Connect to Device and display	4 sec.	16 sec.

\* Testing criteria: PC (CPU J1900) + 16CH NVR

## Function details

### Live

#### a) Support live display channels

CMS Lite supports up to 32-channels live display, while Video Viewer supports up to 16-channels live display.

#### b) Merge 4CH / 16CH NVR/DVR channels

Video demo:

<https://www.youtube.com/watch?v=IVa93OzzcSk&feature=youtu.be>

<https://www.youtube.com/watch?v=IVa93OzzcSk&feature=youtu.be>

There is a limitation for the numbers of users online. Live View does not function if the limitation is reached. Through this function, users are able to gather 4CH / 16CH Live in one zone to decrease the NVR / DVR loading. Please mind that the resolution will be lower after the merging.

### Local Record

#### c) Local Record Setting

- (1) Record Directory: Choose a record sector and create a folder.
- (2) Overwrite: Designate a certain sector for recording and overwriting.
- (3) Profile Select: Set the recording resolution and choose dual-streaming recording according to your needs.



## Remote backup

### d) Backup Event Video Saved in NVR / DVR

This function is used for directly backing up event data from DVR / NVR with a user-friendly interface design.

The screenshot displays a software interface for remote backup of event video. At the top, there are several tabs: 'High reso', 'Low resol.', 'Pre alarm(sec)', 'Post alarm(sec)', 'Event record', 'Manual record', 'Motion', and 'CH.'. The 'Pre alarm(sec)' and 'Post alarm(sec)' fields are set to 10. Below the tabs is a table with the following columns: Name, Time, Channel, Play, and Backup. The table contains 20 rows of motion events. At the bottom of the interface, there are three buttons: 'Pre', 'Next', and 'Cancel'.

Name	Time	Channel	Play	Backup
MOTION	2016/09/28 03:54:43	11	Play	Backup
MOTION	2016/09/28 03:54:21	11	Play	Backup
MOTION	2016/09/28 03:54:04	11	Play	Backup
MOTION	2016/09/28 03:53:53	13	Play	Backup
MOTION	2016/09/28 03:53:13	11	Play	Backup
MOTION	2016/09/28 03:52:51	11	Play	Backup
MOTION	2016/09/28 03:52:37	11	Play	Backup
MOTION	2016/09/28 03:50:59	11	Play	Backup
MOTION	2016/09/28 03:50:46	11	Play	Backup
MOTION	2016/09/28 03:50:32	11	Play	Backup
MOTION	2016/09/28 03:49:56	11	Play	Backup
MOTION	2016/09/28 03:49:18	11	Play	Backup
MOTION	2016/09/28 03:48:37	11	Play	Backup
MOTION	2016/09/28 03:47:07	11	Play	Backup
MOTION	2016/09/28 03:46:50	11	Play	Backup
MOTION	2016/09/28 03:46:19	11	Play	Backup
MOTION	2016/09/28 03:45:44	11	Play	Backup
MOTION	2016/09/28 03:44:04	11	Play	Backup
MOTION	2016/09/28 03:43:23	11	Play	Backup
MOTION	2016/09/28 03:42:22	11	Play	Backup

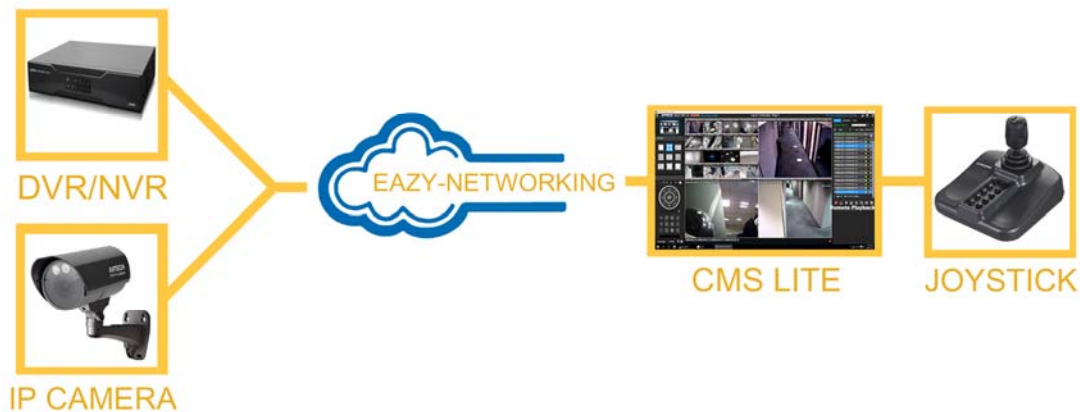
## Architecture

### e) EaZy Networking device support

Users can add EaZy devices to CMS Lite. Sign up an Eazy account in the cell phone and DVR, and then add EaZy devices to the phone. The account could be used for EaZy account login on CMS Lite.

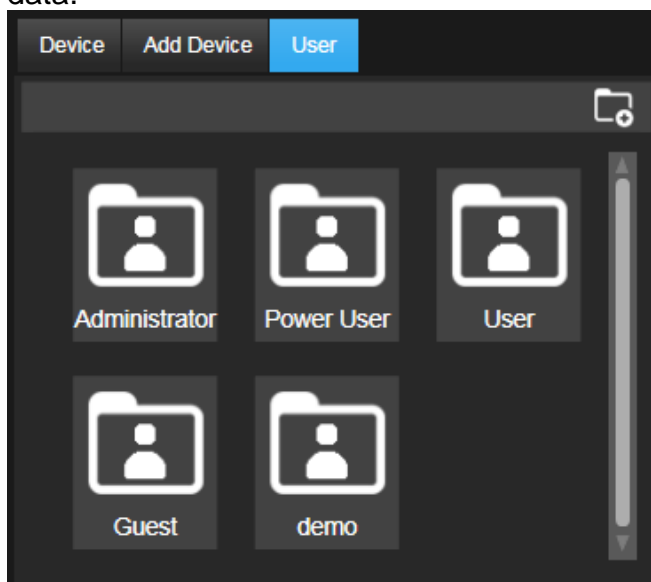
(More information on EagleEyes :  
[http://211.75.84.102/e\\_news/cloud\\_eazynetworking/eazynetworking.html](http://211.75.84.102/e_news/cloud_eazynetworking/eazynetworking.html))

### Application:



### f) User Permission Control

The administrator can grant users different access permission to reach the system and data.



## g) Device Status

In this function, users can learn about the connection condition of NVR / DVR. Go to the CM Lite page and you can easily check the status of the channels.

(Status: VLOSS / Normal)



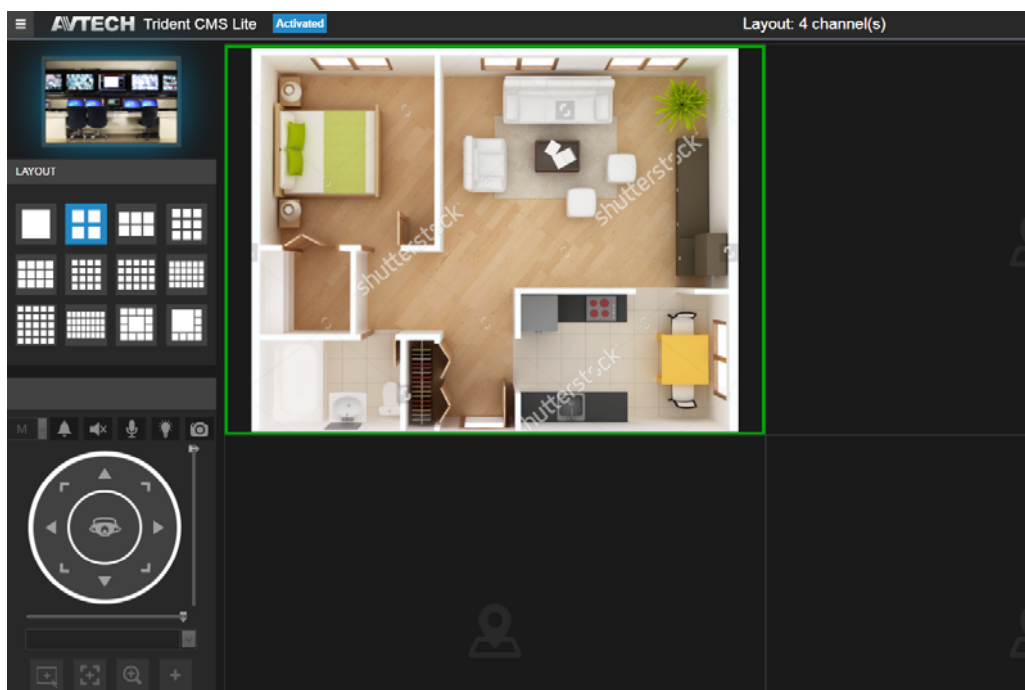
## h) EZUM Camera Support

This function allows you to control and adjust AVTECH EZUM camera series.



## i) EMAP

Import a floor plan of a room or an area to occupy one channel of the display area, and you can place the devices which are actually installed in the room or area on the floor plan. This function conveniently allows you to know the camera placement in a room or an area.



## J) DPTZ

CMS Lite supports digital PTZ movement with the zoom ratio from 1X to 11X, and users can move to any of the zoomed area as needed on the screen.

