

AVZ2017AV



H.265 5MP PENTABRID 16CH XVR

FEATURES

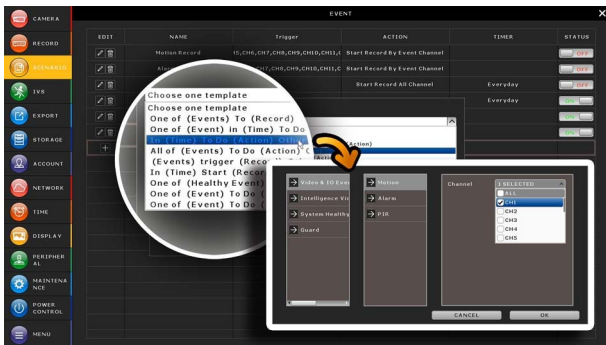
H.265 Compression Technology

- ❖ The recording capacity is greatly enhanced as well as bandwidth saving for better efficiency and performance than the systems employing other compression formats



Scenario Customization

- ❖ Allows you to customize a series of actions which will be run automatically after the specified event occurs. There are several scenario templates for you to choose when and what to do after a specific event occurs.

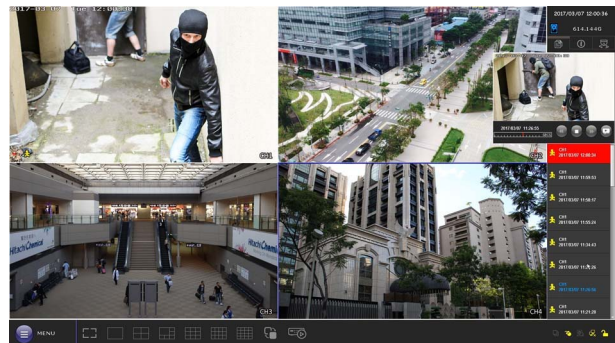


Pentabrid Video Input

- ❖ 16 channels of IP / TVI / CVI / Analog HD / 960H video input, within which IP channels are up to 12 channels
- ❖ Up to 5MP display & recording

Event Pop-up / Preview

- ❖ All events are listed on the right panel with corresponding event icons for you to quickly recognize the event type. The most current one will flash to catch your attention. Click one event and you're able to preview the footage with pre-alarm images.



Free P2P Cloud EaZy Networking

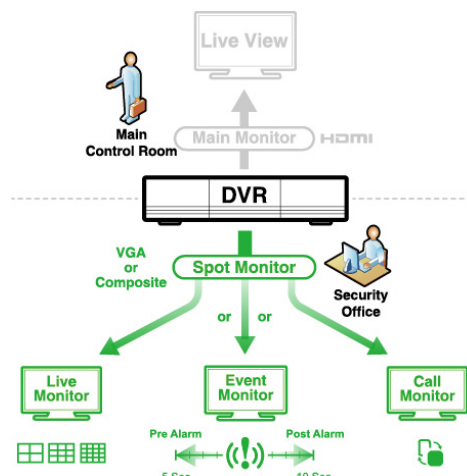
- ❖ Cloud EaZy Networking available to connect this device to Internet automatically in three steps with our free mobile app, EagleEyes.
- ❖ The "Buddy" feature to share the device access permission to other people.
- ❖ Device login / out notifications reported.

Push Video & Push Status - Active Event Notification with EagleEyes App

- ❖ Push Video to send instant notifications for an alarm event when an alarm device is connected to the recorder or the camera which supports external alarm device connection.
- ❖ Push Status to send instant notifications for system events, such as video loss or HDD data removal.

Spot Monitor

- ❖ In addition to the main display via the HDMI output, you can assign a secondary display to show live view, call monitor or event monitor.



▶ SPECIFICATIONS

▼ Video		
Video System		NTSC / PAL (auto detection)
Video Compression Format		H.265
Video Signal		IP / TVI / CVI / Analog HD / 960H
Video Input		16 pentabrid channels (IP / TVI / CVI / Analog HD / 960H), within which IP channels are up to 12 channels
Video Input Interface	Analog Mode	Composite video signal 1 Vp-p 75Ω BNC
	IP Mode	Ethernet, 10/100 Base-T
Video Output	BNC	YES (Spot Monitor supported)
	VGA	YES (Spot Monitor supported / unavailable when video display is set to 4K2K)
	HDMI	YES (4K2K display)
Video Resolution	Analog Mode	5MP / 5MLITE / 4MP / 4MLITE / FHD (1080P) / HD / 960H / Frame / CIF
	IP Mode	2592 x 1944 / 2048 x 1536 / 1920 x 1080 / 1280 x 720 / 720 x 480 / 352 x 240
▼ Record & Backup		
Max. Recording Rate	Analog Mode	Up to 96 IPS @ 5MP Up to 128 IPS @ 4MP Up to 240 IPS @ FHD (1080P)
	IP Mode (12 channels)	UP to 180 IPS @ 2592 x 1944 (5MP) UP to 288 IPS @ 2048 x 1536 (3MP) UP to 360 IPS @ 1920 x 1080
Recording Mode		Manual / Timer / Motion / Alarm / Remote
Playback Channel		16CH
Quick Search		Time / Motion / Alarm search mode
Backup Device		USB 2.0 drive / Network
Regular Backup		YES
▼ Audio		
Audio Input		4
Audio Output		1 (Mono)
▼ External I/O		
RS485		YES
Alarm In		4
Alarm Out		1
▼ General		
Hard Disk Storage		14TB SATA HDD x 2 or 14TB SATA HDD x 1 + external disk array x 1 connected to the recorder via the eSATA interface
SATA Interface		YES
eSATA Interface		Expandable with a SATA to eSATA cable
Image Quality Setting		SUPER BEST / BEST / HIGH / NORMAL
USB Mouse Control		YES
Motion Detection Area		16 × 12 grids per channel
Motion Detection Sensitivity		3 adjustable parameters for accurate detection
Event Notification		Push Video / Push Status / FTP / E-Mail
Event Pop-up & Preview		YES
Scenario Setup		YES
Picture Zoom		2X digital zoom
PTZ Control		YES
Key Lock (Password Protection)		YES
User Level		4 user levels for different access privilege
Video Loss Detection		YES

▶ SPECIFICATIONS

▼ General	
Camera Title	Supports up to 25 letters
Video Adjustable	Hue / Saturation / Contrast / Brightness
Date Display Format	YY/MM/DD, DD/MM/YY & MM/DD/YY
Daylight Saving	YES
Power Source (±10%)	12V / 4A
Operating Temperature	10°C ~ 40°C (50°F ~104°F)
Operating Humidity	10% ~ 85%
Dimensions(mm)**	319.5 x 254.9 x 52
Net Weight (kg)	1.7
▼ Network	
Ethernet	10/100 Base-T. Supports remote control and live view via Ethernet
Network Protocol	TCP/IP, PPPOE, DHCP and DDNS
▼ Remote Surveillance from PC	
Compatible Operating System	Windows & MAC
Compatible Program	Web Browser: Windows Edge, Microsoft Internet Explorer, Google Chrome, Mozilla Firefox & Safari
	CMS Lite: 32CH central management software for Windows OS
Max. online users	40
Web Transmitting Compression Format	H.265
Network Live Audio	YES
Remote Event Download & Playback	YES
▼ Mobile Surveillance	
App	EagleEyes
Compatible Devices	iOS & Android devices
Push Video	YES (16 channels)
Push Status	YES
▼ Others	
EaZy Networking	YES
IVA	YES (4 channels)
Spot Monitor Support	YES (VGA & Composite)
DCCS Support	YES
AVTECH Free DDNS service	YES
Privacy Mask	YES
Multiplex Operation	Live display / record / playback / backup / network operations
System Recovery	System auto recovery after power failure
Optional Peripherals	HDMI Matrix (HDM02) / USB Joystick (AVX102) / SATA to eSATA cable (PWSC07F120200)
Certification	CE / UL (Power Adapter)

* The specifications are subject to change without notice.

** Dimensional tolerance: ±5mm

***** Available only when the connected cameras are supported

▶ REAR PANEL

