

# AVZ4117AX



## H.265 8MP PENTABRID 16CH XVR (Up to 4 HDDs)

### FEATURES

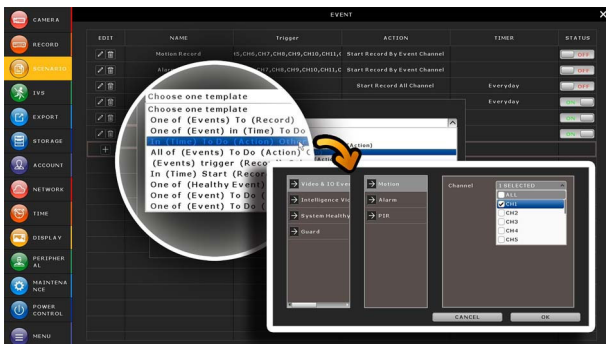
#### H.265 Compression Technology

- The recording capacity is greatly enhanced as well as bandwidth saving for better efficiency and performance than the systems employing other compression formats



#### Scenario Customization

- Allows you to customize a series of actions which will be run automatically after the specified event occurs. There are several scenario templates for you to choose when and what to do after a specific event occurs.



#### Free P2P Cloud EaZy Networking

- Cloud EaZy Networking available to connect this device to Internet automatically in three steps with our free mobile app, EagleEyes.
- The "Buddy" feature to share the device access permission to other people.
- Device login / out notifications reported.

#### Push Video & Push Status -

#### Active Event Notification with EagleEyes App

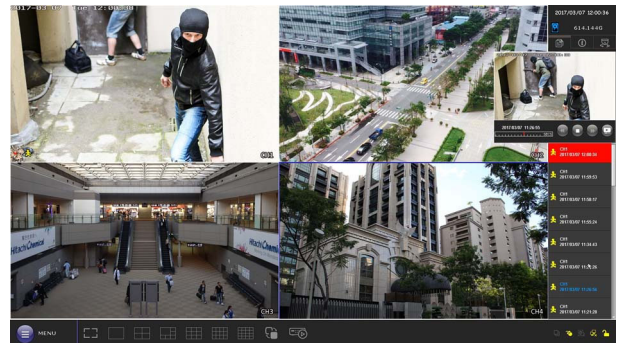
- Push Video to send instant notifications for an alarm event when an alarm device is connected to the recorder or the camera which supports external alarm device connection.
- Push Status to send instant notifications for system events, such as video loss or HDD data removal.

#### Pentabrid Video Input

- 16 channels of IP / TVI / CVI / Analog HD / 960H video input, within which IP channels are up to 12 channels

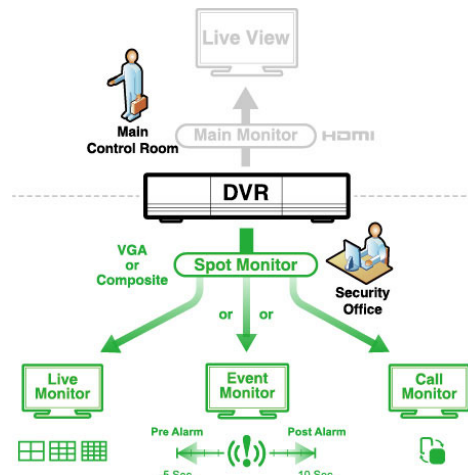
#### Event Pop-up / Preview

- All events are listed on the right panel with corresponding event icons for you to quickly recognize the event type. The most current one will flash to catch your attention. Click one event and you're able to preview the footage with pre-alarm images.



#### Spot Monitor

- In addition to the main display via the HDMI output, you can assign a secondary display to show live view, call monitor or event monitor.





## SPECIFICATIONS

### ▼ Video

|                          |             |  |
|--------------------------|-------------|--|
| Video System             |             | NTSC / PAL (auto detection)  |
| Video Compression Format |             | H.265  |
| Video Signal             |             | IP / TVI / CVI / Analog HD / 960H  |
| Video Input              |             | 16 pentabrid channels (IP / TVI / CVI / Analog HD / 960H)                                  |
| Video Input Interface    | Analog Mode | Composite video signal 1 Vp-p 75Ω BNC  |
|                          | IP Mode     | Ethernet, 10/100/1000 Base-T   |
| Video Output             | BNC         | YES (Spot Monitor supported)   |
|                          | VGA**       | YES (Spot Monitor supported)   |
|                          | HDMI        | YES (4K2K display)   |
| Video Resolution         | Analog Mode | 8MP / 8MP Lite / 5MP / 5MLITE / 4MP / 4MLITE / FHD (1080P) / HD / 960H / Frame / CIF       |
|                          | IP Mode     | 3840 x 2160 / 2592 x 1944 / 2048 x 1536 / 1920 x 1080 / 1280 x 720 / 720 x 480 / 352 x 240 |
| Live Display Mode        | Local       | 16CH   |
|                          | Remote      | 4CH  |
| Playback Display Mode    | Local       | 16CH   |
|                          | Remote      | 4CH  |

### ▼ Record & Backup

|                     |             |  |
|---------------------|-------------|--|
| Max. Recording Rate | Analog Mode | Up to 112 FPS @ 8MP<br>Up to 160 FPS @ 5MP<br>Up to 240 FPS @ 4MP<br>Up to 480 FPS @ FHD (1080P) |
|                     | IP Mode     | Up to 480 FPS @ 8MP / 5MP / 4MP / 3MP / 1080P  |
| Recording Mode      |             | Manual / Timer / Motion / Alarm / Remote   |
| Quick Search        |             | Time / Motion / Alarm search mode  |
| Backup Device       |             | USB 3.0 drive / Network  |
| Regular Backup      |             | YES  |

### ▼ Audio

|              |          |
|--------------|----------|
| Audio Input  | 4        |
| Audio Output | 2 (Mono) |

### ▼ External I/O

|           |  |
|-----------|--|
| RS485     | YES  |
| Alarm In  | 4 in / 2.4V(NC) or 0.3V(NO) threshold DC5V |
| Alarm Out | 1 out / 3A@AC120V, 3A@DC24V                |

### ▼ General

|                                |   |
|--------------------------------|---|
| Hard Disk Storage              | 20TB SATA HDD x 4 or<br>20TB SATA HDD x 3 + external disk array x 1 connected to the recorder via the eSATA interface |
| SATA Interface                 | YES   |
| eSATA Interface                | Expandable with a SATA to eSATA cable   |
| Image Quality Setting          | SUPER BEST / BEST / HIGH / NORMAL   |
| USB Mouse Control              | YES   |
| Motion Detection Area          | 16 × 12 grids per channel   |
| Motion Detection Sensitivity   | 3 adjustable parameters for accurate detection  |
| Event Notification             | Push Video / Push Status / FTP / E-Mail   |
| Event Pop-up & Preview         | YES   |
| Scenario Setup                 | YES   |
| Picture Zoom                   | 8X digital zoom   |
| PTZ Control                    | YES   |
| Key Lock (Password Protection) | YES   |
| User Level                     | 4 user levels for different access privilege  |
| Video Loss Detection           | YES   |
| Video Adjustable               | Hue / Saturation / Contrast / Brightness  |



## SPECIFICATIONS

### ▼ General

|                       |                               |
|-----------------------|-------------------------------|
| Date Display Format   | YY/MM/DD, DD/MM/YY & MM/DD/YY |
| Daylight Saving       | YES                           |
| Power Source (±10%)   | 12V / 12.5A                   |
| Operating Temperature | 0°C ~ 40°C (32°F ~ 104°F)     |
| Operating Humidity    | 10% ~ 85%                     |
| Dimensions(mm)***     | 432 × 90 × 326                |
| Net Weight (kg)       | 2.6                           |

### ▼ Network

|                  |  |
|------------------|--|
| Ethernet         | 10/100/1000 Base-T. Supports remote control and live view via Ethernet |
| Network Protocol | TCP/IP, PPPOE, DHCP and DDNS   |

### ▼ Remote Surveillance from PC

|                                     |               |  |
|-------------------------------------|---------------|--|
| Compatible Operating System         | Windows & MAC |  |
| Compatible Program                  | Web browser   | Windows Edge, Google Chrome, Mozilla Firefox & Opera on Windows 10 (and later versions) and Google Chrome & Mozilla Firefox on MAC |
|                                     | PC program    | 32CH CMS software for Windows OS   |
| Max. online users                   | 40            |  |
| Web Transmitting Compression Format | H.265         |  |
| Network Live Audio                  | YES           |  |
| Remote Event Download & Playback    | YES           |  |

### ▼ Mobile Surveillance

|                    |                       |
|--------------------|-----------------------|
| App                | EagleEyes             |
| Compatible Devices | iOS & Android devices |
| Push Video         | YES (16 channels)     |
| Push Status        | YES                   |

### ▼ Others

|                          |  |
|--------------------------|--|
| EaZy Networking          | YES  |
| IVS****                  | YES (4 channels in analog mode)                                |
| Spot Monitor Support     | YES (VGA & Composite)  |
| DCCS Support             | YES  |
| AVTECH Free DDNS service | YES  |
| Multiplex Operation      | Live display / record / playback / backup / network operations |
| System Recovery          | System auto recovery after power failure                       |
| Optional Peripherals     | SATA to eSATA cable  |
| Certification            | CE / UL (Power Adapter)  |

\* The specifications are subject to change without notice. \*\* Unavailable when HDMI video display is set to 4K2K.

\*\*\* Dimensional tolerance: ±5mm \*\*\*\* Available only when the connected cameras are supported

## REAR PANEL

