

# AVZ8136



## 8-BAY PENTABRID 36CH XVR

### FEATURES

#### Free P2P Cloud EaZy Networking

- ❖ Cloud EaZy Networking available to connect this device to Internet automatically in three steps with our free mobile app, EagleEyes.
- ❖ The “Buddy” feature to share the device access permission to other people.
- ❖ Device login / out notifications reported.

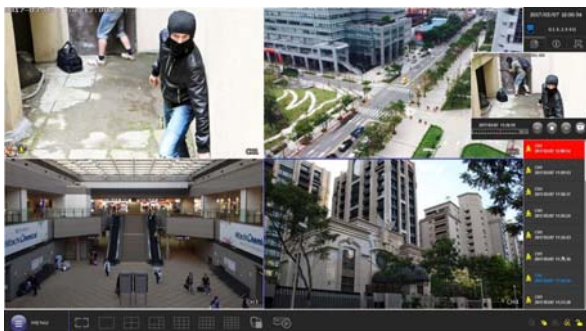
#### Alarm Scenario Customization

- ❖ “Scenario” is a new feature allowing you to customize a series of actions which will be run automatically after the specified event occurs. There are several scenario templates for you to choose when and what to do after a specific event occurs.



#### Event Pop-up / Preview

- ❖ All events are listed on the right panel with corresponding event icons for you to quickly recognize the event type. The most current one will flash to catch your attention. Click one event and you’re able to preview the footage with pre-alarm images.

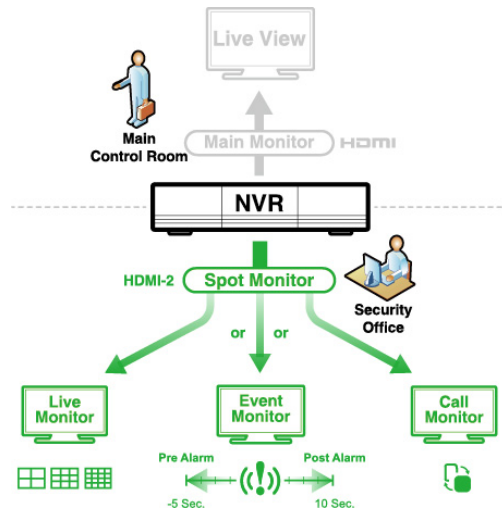


#### Pentabrid Video Input

- ❖ 32 channels of TVI / CVI / Analog HD / 960H video input + 4 IP channels

#### Spot Monitor

- ❖ In addition to the main display via the HDMI output, you can assign a secondary display to show live view, call monitor or event monitor.



#### Push Video & Push Status -

##### Active Event Notification with EagleEyes App

- ❖ Push Video to send instant notifications for an alarm event when an alarm device is connected to the DVR.
- ❖ Push Status to send instant notifications for system events, such as video loss or HDD data removal.

#### 8-bay Storage Capacity

- ❖ To solve the large storage requirement of 1080P recording, this recorder supports up to 8 hard disks to keep high quality video data without overwriting data so quickly. A power-saving mechanism is also adopted to reduce power consumption.

#### Intelligent Video Analysis

- ❖ The Smart TVI DVR supports IVS (Intelligent Video System) to set a virtual detection line for people counting, virtual fence, and one-way pass.

## ▶ SPECIFICATIONS

▼ Video		
Video System		NTSC / PAL (auto detection)
Video Compression Format		H.264
Video Signal		IP / TVI / CVI / Analog HD / 960H
Video Input		32 quadbrid channels (TVI / CVI / Analog HD / 960H) + 4 IP channels
Video Input Interface	Analog Mode	Composite video signal 1 Vp-p 75Ω BNC
	IP Mode	Ethernet, 1000 Base-T
Video Output	BNC	YES (Spot Monitor supported)
	VGA	YES (1080P display / Spot Monitor supported)
	HDMI	HDMI-1 (4K2K display) / HDMI-2 (1080P display / Spot Monitor supported)
Video Resolution	Analog Mode	1080P / 720P / QHD / 960H / Frame / Field / CIF
	IP Mode	1920 x 1080 / 1280 x 720 / 640 x 480 / 320 x 240
▼ Record & Backup		
Max. Recording Rate	Analog Mode	Up to 384 IPS @ 1920 x 1080 (32 channels)
	IP Mode	UP to 60 IPS @ 2592 x 1944 (4 channels) UP to 120 IPS @ 1920 x 1080 (4 channels)
Recording Mode		Manual / Timer / Motion / Alarm / Remote
Pre-alarm Recording		YES
Playback Channel		16CH
Quick Search		Time / Motion / Alarm search mode
Backup Device		USB 3.0 drive / Network
Regular Backup		YES (USB hard drive or FTP)
▼ Audio		
Audio Input		16
Audio Output (Mono)		2
▼ External I/O		
RS485		YES
Alarm Input		8
Alarm Output		1
Alarm Scenario		YES
▼ General		
Hard Disk Storage		14TB SATA HDD x 8
SATA Interface		YES
Image Quality Setting		SUPER BEST / BEST / HIGH / NORMAL
USB Mouse Control		YES
Motion Detection Area		16 × 12 grids per channel
Motion Detection Sensitivity		3 adjustable parameters for accurate detection
Event Notification		Push Video / Push Status / FTP / E-Mail
Event Pop-up & Preview		YES
Picture Zoom		2X digital zoom
PTZ Control		YES
Key Lock (Password Protection)		YES
User Level		4 user levels for different access privilege
Video Loss Detection		YES
Camera Title		Supports up to 25 letters
Video Adjustable		Hue / Saturation / Contrast / Brightness
Date Display Format		YY/MM/DD, DD/MM/YY & MM/DD/YY
Daylight Saving		YES
Power Source (±10%)		19V/4.7A
Operating Temperature		10°C ~ 40°C (50°F ~104°F)
Operating Humidity		10% ~ 85%
Dimensions (mm)**		358 x 267 x 152
Net Weight (kg)		5.9 kg

## SPECIFICATIONS

▼ Network	
Ethernet	1000 Base-T. Supports remote control and live view via Ethernet
Network Protocol	TCP/IP, PPPOE, DHCP and DDNS
▼ Remote Surveillance from PC	
Compatible Operating System	Windows & MAC
Compatible Program	Web Browser: <ul style="list-style-type: none"> <li>■ Windows Edge, Internet Explorer (Windows 8 and later version)</li> <li>■ Safari, Google Chrome &amp; Mozilla Firefox (Windows Vista and later version)</li> </ul>
	CMS Lite:
Max. online users	36
Web Transmitting Compression Format	H.264
Remote Live Display	9CH (Selectable)
Network Live Audio	YES
Remote Event Download & Playback	YES
▼ Mobile Surveillance	
App	EagleEyes
Compatible Devices	iOS & Android devices
Push Video	YES (9CH)
Push Status	YES
▼ Others	
EaZy Networking	YES
Alarm Scenario Setup	YES
Spot Monitor Setup	Call Monitor / Event Monitor / Live Monitor (HDMI-2, VGA & Composite Selectable)
IVA	YES (CH1 ~ CH4 in analog mode)
DCCS Support	YES
AVTECH Free DDNS service	YES
Privacy Mask	YES
Multiplex Operation	Live display / record / playback / backup / network operations
System Recovery	System auto recovery after power failure
Optional Peripherals	HDMI Matrix (HDM02) / USB Joystick (AVX102)
Certification	CE

\* The specifications are subject to change without notice.

\*\* Dimensional tolerance: ±5mm

## REAR PANEL

