

DGD1009AX



H.265 PENTABRID 8CH XVR

FEATURES

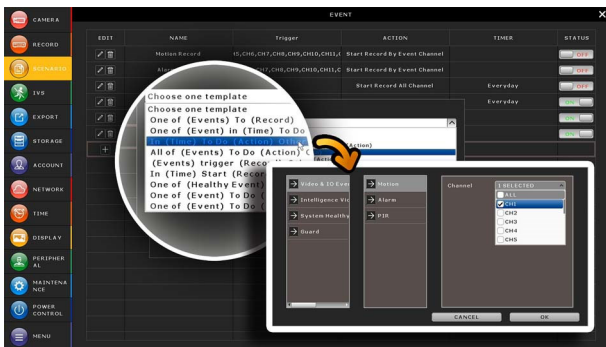
H.265 Compression Technology

- ❖ The recording capacity is greatly enhanced as well as bandwidth saving for better efficiency and performance than the systems employing other compression formats



Scenario Customization

- ❖ Allows you to customize a series of actions which will be run automatically after the specified event occurs. There are several scenario templates for you to choose when and what to do after a specific event occurs.

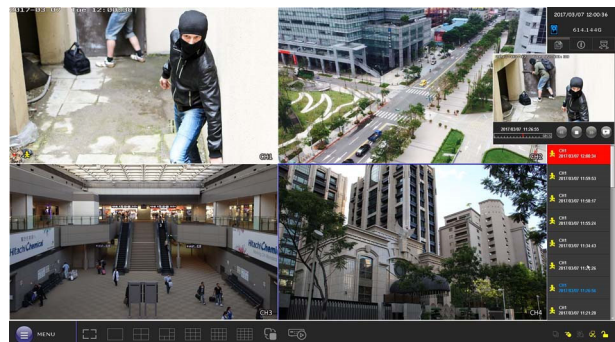


Pentabrid Video Input

- ❖ 8 channels of IP / TVI / CVI / Analog HD / 960H video input

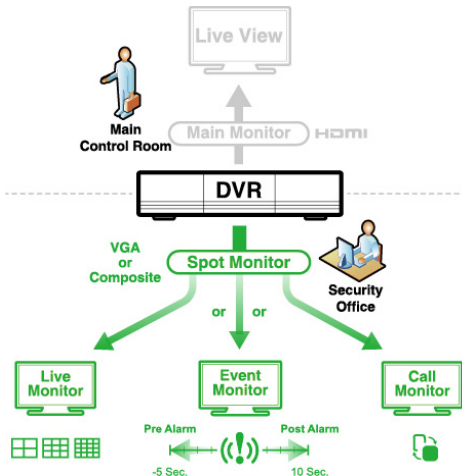
Event Pop-up / Preview

- ❖ All events are listed on the right panel with corresponding event icons for you to quickly recognize the event type. The most current one will flash to catch your attention. Click one event and you're able to preview the footage with pre-alarm images.



Spot Monitor

- ❖ In addition to the main display via the HDMI output, you can assign a secondary display to show live view, call monitor or event monitor.



Free P2P Cloud EaZy Networking*

- ❖ Cloud EaZy Networking available to connect this device to Internet automatically in three steps with our free mobile app, EagleEyes.
- ❖ The "Buddy" feature to share the device access permission to other people.
- ❖ Device login / out notifications reported.

Push Video & Push Status - Active Event Notification with EagleEyes App

- ❖ Push Video to send instant notifications for an alarm event when an alarm device is connected to the camera which supports external alarm device connection.
- ❖ Push Status to send instant notifications for system events, such as video loss or HDD data removal.

▶ SPECIFICATIONS

▼ Video		
Video System		NTSC / PAL (auto detection)
Video Compression Format		H.265
Video Signal		IP / TVI / CVI / Analog HD / 960H
Video Input		8 pentabrid channels (IP / TVI / CVI / Analog HD / 960H)
Video Input Interface	Analog Mode	Composite video signal 1 Vp-p 75Ω BNC
	IP Mode	Ethernet, 10/100 Base-T
Video Output	BNC	YES (Spot Monitor supported)
	VGA*	YES (Spot Monitor supported)
	HDMI	YES (4K2K display)
Video Resolution	Analog Mode	8MP Lite / 5MP / 5MLITE / 4MP / 4MLITE / FHD (1080P) / HD / 960H / Frame / CIF
	IP Mode	2592 x 1944 / 2048 x 1536 / 1920 x 1080 / 1280 x 720 / 720 x 480 / 352 x 240
Live Display Mode	Local	8CH
	Remote	4CH
Playback Display Mode	Local	8CH
	Remote	4CH
▼ Record & Backup		
Max. Recording Rate	Analog Mode	Up to 56 IPS @ 8MP Lite Up to 48 IPS @ 5MP Up to 60 IPS @ 4MP Up to 120 IPS @ FHD (1080P)
	IP Mode	UP to 120 IPS @ 2592 x 1944 (5MP) / 2048 x 1536 (3MP) / 1920 x 1080
Recording Mode		Manual / Timer / Motion / Alarm / Remote
Quick Search		Time / Motion / Alarm search mode
Backup Device		USB 2.0 drive / Network
Regular Backup		YES
▼ Audio		
Audio Input		4
Audio Output		1 (Mono)
▼ External I/O		
RS485		YES
Alarm Input		4
Alarm Output		1
▼ General		
Hard Disk Storage		20TB SATA HDD x 1 or external disk array x 1 connected to the recorder via the eSATA interface
SATA Interface		YES
eSATA Interface		Expandable with a SATA to eSATA cable
Image Quality Setting		SUPER BEST / BEST / HIGH / NORMAL
USB Mouse Control		YES
Motion Detection Area		16 × 12 grids per channel
Motion Detection Sensitivity		3 adjustable parameters for accurate detection
Event Notification		Push Video / Push Status / FTP / E-Mail
Event Pop-up & Preview		YES
Scenario Setup		YES
Picture Zoom		2X digital zoom
PTZ Control		YES
Key Lock (Password Protection)		YES
User Level		4 user levels for different access privilege
Video Loss Detection		YES

▶ SPECIFICATIONS

▼ General		
Video Adjustable	Hue / Saturation / Contrast / Brightness	
Date Display Format	YY/MM/DD, DD/MM/YY & MM/DD/YY	
Daylight Saving	YES	
Power Source (±10%)	12V / 2A	
Operating Temperature	10°C ~ 40°C (50°F ~104°F)	
Operating Humidity	10% ~ 85%	
Dimensions(mm)**	260 x 235.7 x 48	
Net Weight (kg)	1.35	
▼ Network		
Ethernet	10/100 Base-T. Supports remote control and live view via Ethernet	
Network Protocol	TCP/IP, PPPOE, DHCP and DDNS	
▼ Remote Surveillance from PC		
Compatible Operating System	Windows & MAC	
Compatible Program	Web browser	Windows Edge, Google Chrome, Mozilla Firefox & Opera on Windows 10 (and later versions) and Google Chrome & Mozilla Firefox on MAC
	PC program	32CH CMS software for Windows OS
Max. online users	20	
Web Transmitting Compression Format	H.265	
Network Live Audio	YES	
Remote Event Download & Playback	YES	
▼ Mobile Surveillance		
App	EagleEyes	
Compatible Devices	iOS & Android devices	
Push Video	YES (8 channels)	
Push Status	YES	
▼ Others		
EaZy Networking	YES	
Spot Monitor Support	YES (VGA or Composite)	
DCCS Support	YES	
AVTECH Free DDNS service	YES	
Privacy Mask	YES	
Multiplex Operation	Live display / record / playback / backup / network operations	
System Recovery	System auto recovery after power failure	
Optional Peripherals	SATA to eSATA cable (PWSC07F120200)	
Certification	CE / UL (Power Adapter)	

* The VGA display will be off when the HDMI display is set to 4K2K

** Dimensional tolerance: ±5mm.

*** The specifications are subject to change without notice.

▶ REAR PANEL

