

DGD2017AIX-U2



100% MIT | AI | Eazy Networking | PUSH VIDEO | PUSH Status

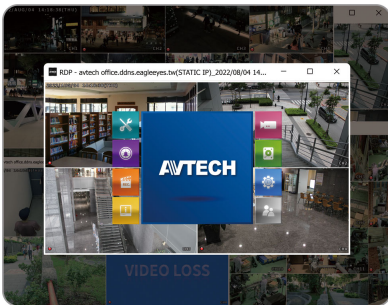
NDA Compliant | TAA Compliant

AI-BASED H.265 5MP PENTABRID 16CH XVR

FEATURES

Unlimited Channel Remote Live View

The ETU line of recorders allows you to see as many ETU devices simultaneously as needed without a CMS license. Its dedicated AVTECH desktop application lets you view all your ETU recorders from a single PC and screen becoming a suitable solution for all sizes of businesses and projects.



AI Implement on XVR

The AI-based video detection algorithms are processed at the recorder side, not at the AI-enabled IP camera side or CMS site. Only one AI XVR and any cameras can realize the advanced detection functions to detect humans, vehicles and faces.



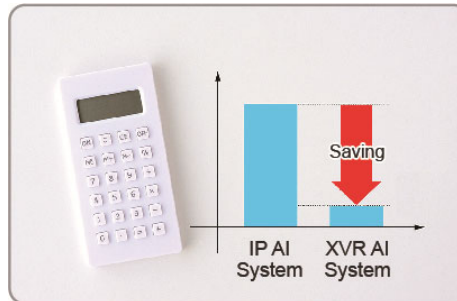
Easy to Use Interface

The ETU line of recorders implements a fully redesigned interface for ease of use providing a plug & play experience for all AVTECH users. The ETU series allows you to avoid time-consuming setup and focus on what is truly important.



AI Solution under Budget

Simply replace your HD CCTV recorder with this XVR and you'll have the AI-based human and vehicle detection. You don't need to purchase AI-enabled IP cameras or CMS license with high budget.



Free & Quick P2P Cloud Service

Simply scan to complete internet setup via our cloud service, **Eazy Networking**, to save you all the troubles of complicated network configurations.

Active Event Notification with APP

The app, **AVTECH DVR**, supports the ETU recorder line to send Push Video messages for alarm or motion events and Push Status messages for system events, such as video loss or HDD data removal.

▶ SPECIFICATIONS

▼ Video		
Video System		NTSC / PAL (auto detection)
Video Compression Format		H.265
Video Signal		IP / TVI / CVI / Analog HD / 960H
Video Input		16 pentabrid channels (IP / TVI / CVI / Analog HD / 960H)
Video Input Interface	Analog Mode	Composite video signal 1 Vp-p 75Ω BNC
	IP Mode	Ethernet, 10/100 Base-T
Video Output	BNC	YES (Spot Monitor supported)
	VGA*	YES (Spot Monitor supported)
	HDMI	YES (4K2K display)
Video Resolution	Analog Mode	8MP Lite / 5MP / 5MLITE / 4MP / 4MLITE / FHD (1080P) / HD / 960H / Frame / CIF
	IP Mode	2592 x 1944 / 2048 x 1536 / 1920 x 1080 / 1280 x 720 / 720 x 480 / 352 x 240
Live Display Mode	Local	16CH
	Remote	4CH
Playback Display Mode	Local	16CH
	Remote	4CH (Web Browser) / 16CH (Remote Desktop Program)
▼ Record & Backup		
Max. Recording Rate	Analog Mode	Up to 112 IPS @ 8MP Lite Up to 96 IPS @ 5MP Up to 160 IPS @ 5MP Lite Up to 120 IPS @ 4MP Up to 240 IPS @ 4MP Lite Up to 240 IPS @ FHD (1080P)
	IP Mode	UP to 480 IPS @ 2592 x 1944 (5MP) / 2048 x 1536 (3MP) / 1920 x 1080
Recording Mode		Manual / Timer / Motion / Alarm / Remote
Quick Search		Time / Motion / Alarm search mode
Backup Device		USB 3.0 drive / Network
▼ Audio		
Audio Input		4
Audio Output		1 (Mono)
▼ External I/O		
RS485		YES
Alarm In		4 in / 2.4V(NC) or 0.3V(NO) threshold DC5V
Alarm Out		1 out / 3A@AC120V, 3A@DC24V
▼ General		
Hard Disk Storage		20TB SATA HDD x 2 + external disk array x 1 connected to the recorder via the eSATA interface
SATA Interface		YES
eSATA Interface		Expandable with a SATA to eSATA cable
Image Quality Setting		SUPER BEST / BEST / HIGH / NORMAL
USB Mouse Control		YES
Motion Detection Area		16 × 12 grids per channel
Motion Detection Sensitivity		10 levels
AI Detection Channel		8 channels in analog mode
AI Detection Function		Face, human and vehicle detection (Flow Counting, Virtual Fence and Perimeter Intrusion can be further configured when human or vehicle detection is chosen.)
Event Notification		Push Video / Push Status / E-Mail
Picture Zoom		8X digital zoom
PTZ Control		YES
Key Lock (Password Protection)		YES
User Level		4 user levels for different access privilege
Video Loss Detection		YES

▶ SPECIFICATIONS

▼ General		
Video Adjustable	Hue / Saturation / Contrast / Brightness	
Date Display Format	YY/MM/DD, DD/MM/YY & MM/DD/YY	
Daylight Saving	YES	
Power Source (±10%)	12V / 5A	
Operating Temperature	0°C ~ 40°C (32°F ~104°F)	
Operating Humidity	10% ~ 85%	
Dimensions(mm)**	319.5 x 254.9 x 52	
Net Weight (kg)	1.7	
▼ Network		
Ethernet	10/100 Base-T. Supports remote control and live view via Ethernet	
Network Protocol	TCP/IP, PPPOE, DHCP and DDNS	
▼ Remote Surveillance from PC		
Remote Access	Web browser	Windows Edge, Google Chrome, Mozilla Firefox & Opera on Windows 10 (and later versions) and Google Chrome & Mozilla Firefox on MAC
	PC program	Remote Desktop Program for Windows OS
	PC program	32CH CMS software for Windows OS
Max. online users	40	
Web Transmitting Compression Format	H.265	
Network Live Audio	YES	
Remote Event Download & Playback	YES	
▼ Mobile Surveillance		
App	AVTECH DVR	
Compatible Devices	iOS & Android devices	
Push Video	YES (16 channels)	
Push Status	YES	
▼ Others		
EaZy Networking	YES	
Spot Monitor Support	YES (VGA or Composite)	
DCCS Support	YES	
AVTECH Free DDNS service	YES	
Multiplex Operation	Live display / record / playback / backup / network operations	
System Recovery	System auto recovery after power failure	
Optional Peripherals	SATA to eSATA cable (PWSC07F120200)	
Certification	CE / UL (Power Adapter)	

* The VGA display will be off when the HDMI display is set to 4K2K ** Dimensional tolerance: ±5mm. *** The specifications are subject to change without notice.

▶ REAR PANEL

