

# DGD2017AIX



## AI-BASED H.265 PENTABRID 16CH XVR

### FEATURES

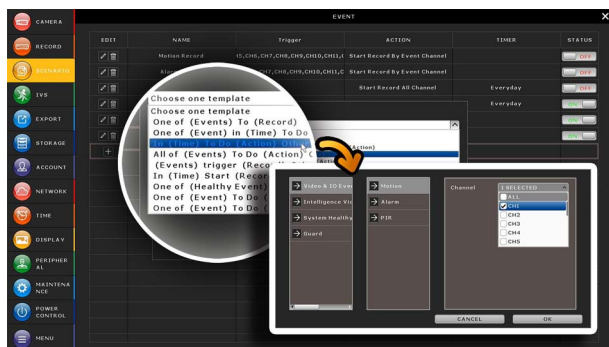
#### AI Implement on XVR

- ❖ The AI-based video detection algorithms are processed at the recorder side, not at the AI-enabled IP camera side or CMS site. Only one AI XVR and any cameras can realize the advanced detection functions to detect humans, vehicles and faces.



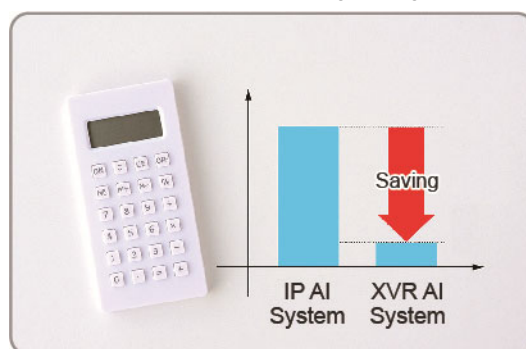
#### Scenario Customization

- ❖ Allows you to customize a series of actions which will be run automatically after the specified event occurs. There are several scenario templates for you to choose when and what to do after a specific event occurs.



#### AI Solution under Budget

- ❖ Simply replace your HD CCTV recorder with this XVR and you'll have the AI-based human and vehicle detection. You don't need to purchase AI-enabled IP cameras or CMS license with high budget.



#### Free P2P Cloud EaZy Networking

- ❖ Cloud EaZy Networking available to connect this device to Internet automatically in three steps with our free mobile app, EagleEyes.
- ❖ The "Buddy" feature to share the device access permission to other people.
- ❖ Device login / out notifications reported.

#### Push Video & Push Status -

##### Active Event Notification with EagleEyes App

- ❖ Push Video to send instant notifications for an alarm event when an alarm device is connected to the recorder or the camera which supports external alarm device connection.
- ❖ Push Status to send instant notifications for system events, such as video loss or HDD data removal.

#### Product Developing & Manufacturing in Taiwan

- ❖ The SoCs adopted and product developing and manufacturing are all originated from Taiwan to secure product quality and network privacy.

## SPECIFICATIONS

### ▼ Video

Video System		NTSC / PAL (auto detection)
Video Compression Format		H.265
Video Signal		IP / TVI / CVI / Analog HD / 960H
Video Input		16 pentabrid channels (IP / TVI / CVI / Analog HD / 960H)
Video Input Interface	Analog Mode	Composite video signal 1 Vp-p 75Ω BNC
	IP Mode	Ethernet, 10/100 Base-T
Video Output	BNC	YES (Spot Monitor supported)
	VGA*	YES (Spot Monitor supported)
	HDMI	YES (4K2K display)
Video Resolution	Analog Mode	8MP Lite / 5MP / 5MLITE / 4MP / 4MLITE / FHD (1080P) / HD / 960H / Frame / CIF
	IP Mode	2592 x 1944 / 2048 x 1536 / 1920 x 1080 / 1280 x 720 / 720 x 480 / 352 x 240
Live Display Mode	Local	16CH
	Remote	4CH
Playback Display Mode	Local	16CH
	Remote	4CH

### ▼ Record & Backup

Max. Recording Rate	Analog Mode	Up to 112 FPS @ 8MP Lite Up to 96 FPS @ 5MP Up to 160 FPS @ 5MP Lite Up to 120 FPS @ 4MP Up to 240 FPS @ 4MP Lite Up to 240 FPS @ FHD (1080P)
	IP Mode	Up to 480 FPS @ 2592 x 1944 (5MP) / 2048 x 1536 (3MP) / 1920 x 1080
Recording Mode		Manual / Timer / Motion / Alarm / Remote
Quick Search		Time / Motion / Alarm search mode
Backup Device		USB 3.0 drive / Network
Regular Backup		YES

### ▼ Audio

Audio Input	4
Audio Output	1 (Mono)

### ▼ External I/O

RS485	YES
Alarm In	4 in / 2.4V(NC) or 0.3V(NO) threshold DC5V
Alarm Out	1 out / 3A@AC120V, 3A@DC24V

### ▼ General

Hard Disk Storage	20TB SATA HDD x 2 + external disk array x 1 connected to the recorder via the eSATA interface
SATA Interface	YES
eSATA Interface	Expandable with a SATA to eSATA cable
Image Quality Setting	SUPER BEST / BEST / HIGH / NORMAL
USB Mouse Control	YES
Motion Detection Area	16 × 12 grids per channel
Motion Detection Sensitivity	3 adjustable parameters for accurate detection
AI Detection Channel	8 channels in analog mode
AI Detection Function	Face, human and vehicle detection (Flow Counting, Virtual Fence and Perimeter Intrusion can be further configured when human or vehicle detection is chosen.)
Event Notification	Push Video / Push Status / FTP / E-Mail
Event Pop-up & Preview	YES
Scenario Setup	YES
Picture Zoom	8X digital zoom

## SPECIFICATIONS

### ▼ General

PTZ Control	YES
Key Lock (Password Protection)	YES
User Level	4 user levels for different access privilege
Video Loss Detection	YES
Video Adjustable	Hue / Saturation / Contrast / Brightness
Date Display Format	YY/MM/DD, DD/MM/YY & MM/DD/YY
Daylight Saving	YES
Power Source (±10%)	12V / 5A
Operating Temperature	0°C ~ 40°C (32°F ~104°F)
Operating Humidity	10% ~ 85%
Dimensions(mm)**	319.5 x 254.9 x 52
Net Weight (kg)	1.7

### ▼ Network

Ethernet	10/100 Base-T. Supports remote control and live view via Ethernet
Network Protocol	TCP/IP, PPPOE, DHCP and DDNS

### ▼ Remote Surveillance from PC

Compatible Operating System	Windows & MAC	
Compatible Program	Web browser	Windows Edge, Google Chrome, Mozilla Firefox & Opera on Windows 10 (and later versions) and Google Chrome & Mozilla Firefox on MAC
	PC program	32CH CMS software for Windows OS
Max. online users	40	
Web Transmitting Compression Format	H.265	
Network Live Audio	YES	
Remote Event Download & Playback	YES	

### ▼ Mobile Surveillance

App	EagleEyes
Compatible Devices	iOS & Android devices
Push Video	YES (16 channels)
Push Status	YES

### ▼ Others

EaZy Networking	YES
Spot Monitor Support	YES (VGA or Composite)
DCCS Support	YES
AVTECH Free DDNS service	YES
Privacy Mask	YES
Multiplex Operation	Live display / record / playback / backup / network operations
System Recovery	System auto recovery after power failure
Optional Peripherals	SATA to eSATA cable
Certification	CE / UL (Power Adapter)

\* The VGA display will be off when the HDMI display is set to 4K2K

\*\* Dimensional tolerance: ±5mm.

\*\*\* The specifications are subject to change without notice.

## REAR PANEL

