



DGH2115BX-U2

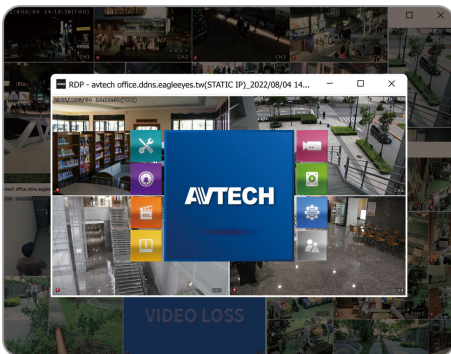
EaZy Networking
Push Video / Push Status
Easy-to-use Interface

16CH H.265 NVR

Features

Unlimited Channel Remote Live View

The ETU line of recorders allows you to see as many ETU devices simultaneously as needed without a CMS license. Its dedicated AVTECH desktop application lets you view all your ETU recorders from a single PC and screen becoming a suitable solution for all sizes of businesses and projects.



Easy to Use Interface

The ETU line of recorders implements a fully redesigned interface for ease of use providing a plug & play experience for all AVTECH users. The ETU series allows you to avoid time-consuming setup and focus on what is truly important.



100% Made in Taiwan

AVTECH is well-known for its MIT product quality and innovation ability in the CCTV industry. We design and manufacture all of our products in Taiwan and all products are NDA- and TAA-compliant.



Free & Quick P2P Cloud Service

Simply scan to complete internet setup via our cloud service, EaZy Networking, to save you all the troubles of complicated network configurations.

Active Event Notification with APP

The app, AVTECH DVR, supports the ETU recorder line to send Push Video messages for alarm or motion events and Push Status messages for system events, such as video loss or HDD data removal.

Remote Surveillance

Remote surveillance is available via the app, AVTECH DVR, and the AVTECH desktop program compatible with Windows OS only

Specifications*

| Hardware | | |
|-------------------------------|---------------------|---|
| Video Input | | One LAN port (up to 16 IP cameras) |
| Video Output | HDMI | YES (4K2K) |
| | VGA | YES (1080P / Spot Monitor Supported) |
| Video Output Resolution | | 4K2K (3840 x 2160) |
| HDD Storage** | | Either two 20TB SATA HDD installed in the recorder, or one 20TB SATA HDD installed and a disk array connected to the recorder via the eSATA interface |
| USB Port | | USB 2.0 x 2 |
| eSATA Port | | Expandable with a SATA to eSATA cable |
| RS485 Port | | YES |
| Ethernet | LAN port | 1000 Mbps x 1 |
| | Internet (WAN) port | 1000 Mbps x 1 |
| Fan | | YES |
| Software | | |
| Video Compression Format | | H.265 |
| Audio Compression Format | | G711 |
| Live Display Mode | Local | 16CH |
| | Remote | 4CH |
| Playback Display Mode | Local | 16CH |
| | Remote | 4CH |
| Local Single Channel Playback | | YES |
| Recording Mode | | Manual / Event / Alarm / Schedule |
| Record Streaming | | Dual |
| Recording Resolution | | 480 IPS @ 4K2K (3840 x 2160) |
| Recording Throughput | | 160Mbps |
| Pre-alarm Recording | | YES |
| Quick Search | | Time / Event |
| Event Notification | | Push Video / Push Status / E-Mail |
| Security | | Multiple user access levels with password |
| EaZy Networking | | YES |
| Spot Monitor Setup | | Call Monitor / Event Monitor / Live Monitor (VGA) |
| Free DDNS Service | | YES |
| Network | | |
| Protocols | | DDNS, PPPoE, DHCP, NTP, SNTP, TCP/IP, ICMP, SMTP, FTP, HTTP, RTP, RTSP, RTCP, IPv4, UPnP, DNS, UDP, IGMP |
| ONVIF Compatible | | YES |

Specifications*

| Remote Surveillance from PC | | |
|----------------------------------|---|--|
| Remote Access | Web browser | Windows Edge, Google Chrome, Mozilla Firefox & Opera on Windows 10 (and later versions) and Google Chrome & Mozilla Firefox on MAC |
| | PC program | Remote Desktop program for Windows OS |
| | PC program | 32CH CMS software for Windows OS |
| Max. Online User | | 40 |
| Mobile Surveillance | | |
| APP | AVTECH DVR | |
| Compatible Devices | iOS & Android devices | |
| Push Video | YES (16CH) | |
| Push Status | YES | |
| General | | |
| Power Source (±10%) | DC12V / 3A | |
| Operating Temperature | 0°C ~ 40°C (32°F ~ 104°F) | |
| Operating Humidity | 10% ~ 85% | |
| Dimensions (mm)*** | 319.5 x 254.9 x 52 | |
| Net Weight (kg) | 2 | |
| Minimum PC Browsing Requirements | <ul style="list-style-type: none"> • Intel core i3 or higher, or equivalent AMD • 2GB RAM • AGP graphics card, Direct Draw, 32MB RAM • Windows 10 and later versions • Windows Edge, Google Chrome, Mozilla Firefox & Opera on Windows 10 (and later versions) | |
| Optional Peripherals | USB Joystick (AVX102) / SATA to eSATA cable (PWSC07F120200) | |
| Certification | CE / UL (Power Adapter) | |

*The specifications are subject to change without notice ** HDDs are optional. *** Dimensional tolerance: ±5mm

Rear Panel

