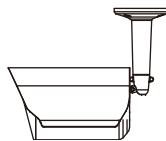


CAMERA INSTALLATION

To check the complete user manual and free PC CMS software (CMS Lite), please scan the QR code or go to www.surveillance-download.com/user/p359a.swf



TYPE1



Standard package



Camera



Installation Guide



Bracket



Screws & wall plugs

Optional



Desiccants

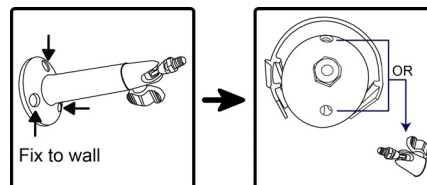


CD manual

Step1: Fix the bracket to where you want to install the camera with the supplied screws.

Note: A file for its installation sticker could be downloaded from www.surveillance-download.com/user/a_installation_sticker.pdf.

Step2: Remove the Joint Lock from the bracket. Then, connect the Joint Lock to the backside of the camera.



Step3: Connect the camera with the Joint Lock connected to the bracket, and secure the Joint Lock to fix.

Step4: (Optional) To install a microSD card if supported, open the camera front cover, and refer to the section of "INSERT A MICRO SD CARD" for details.

Step5: (Optional) To adjust the focus and focal length if supported, open the front cover of the camera, and refer to the section of "ADJUST FOCAL LENGTH & FOCUS" for details.

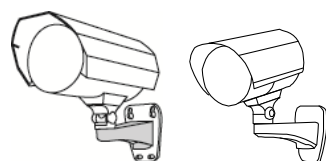
Step6: Adjust the viewing angle of the camera.

Note: With the camera, please adjust the angle up and down within 30 degree respectively, left and right within 15 degree respectively.

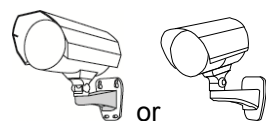
Step7: Fasten the sun shield to the camera.

Note: Secure the Joint Lock tightly to avoid the camera dropping down.

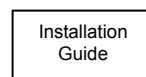
TYPE2



Standard package



Camera and Sun Shield



Instructions



Screws & wall plugs

Optional



Installation Sticker



Desiccants

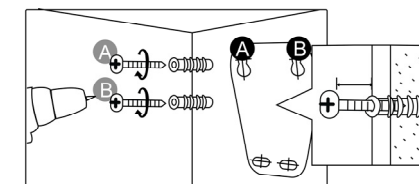


CD manual

Step1: Paste the installation sticker on where you want to install the camera. Then, drill 4 screw holes as indicated on the sticker, and fasten two screws to the top as shown on the right.

Note: Leave some space between the screws and wall to hook the bracket later.

Step2: Hang the camera at the screws you just fixed, and make sure the camera stays in place. Decide the cable direction (up / down) before you fasten the screws tight to the wall.



Step3: Fasten all screws to secure the bracket to the wall.

Step4: Adjust the vertical and horizontal angles of the camera with a wrench for a better viewing.

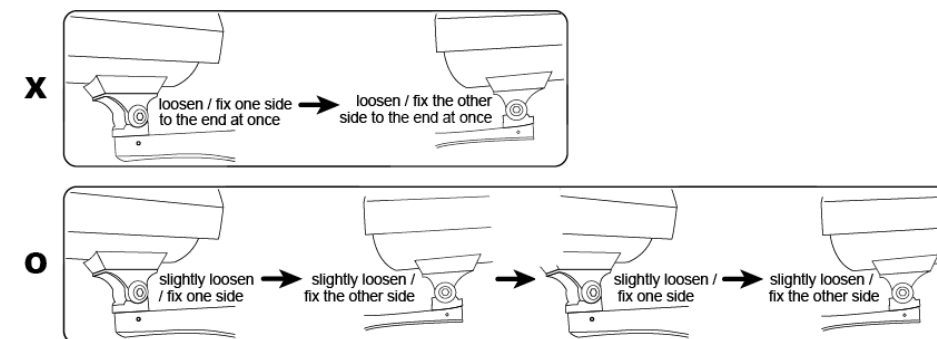
Note: To adjust the angle, for example the vertical angle. DO NOT loosen / fix one side of the screw to the end at once. Please do adjustment by taking turns on both sides till the angle is fixed. Otherwise, the angle of the camera might not be fixed.

Note: In order to make the best performance, please adjust the angle of IR shift up and down within 30 degree respectively, left and right within 15 degree respectively.

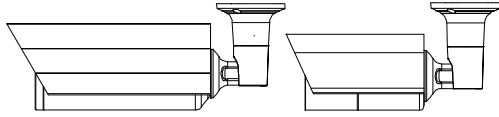
Step5: (Optional) To install a microSD card if supported, open the camera front cover, and refer to the section of "INSERT A MICRO SD CARD" for details.

Step6: (Optional) To adjust the focus and focal length if supported, open the front cover of the camera, and refer to the section of "ADJUST FOCAL LENGTH & FOCUS" for details.

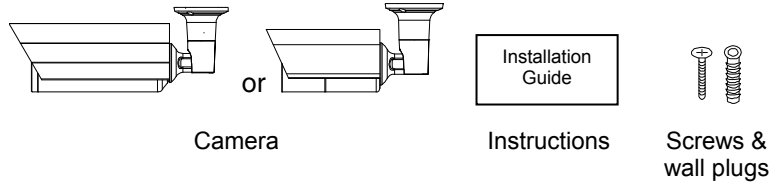
Step7: Fasten the sun shield to the camera.



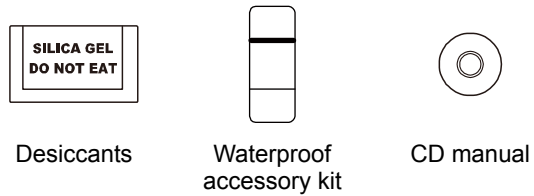
■ TYPE3



▼ Standard package



▼ Optional



Step1: Remove the sun shield from the camera.

Step2: Locate where you want to install this camera, and fasten the camera to the ceiling or wall (*Figure 1*).

Note: A file for its installation sticker could be downloaded from www.surveillance-download.com/user/c_installation_sticker.pdf.

Note: It's recommended to slightly loosen the screw on the bracket as indicated below to move the camera down a little bit. It's easier for bracket installation.

Step3: Adjust the viewing angle of the camera, as indicated in *Figure 2*.

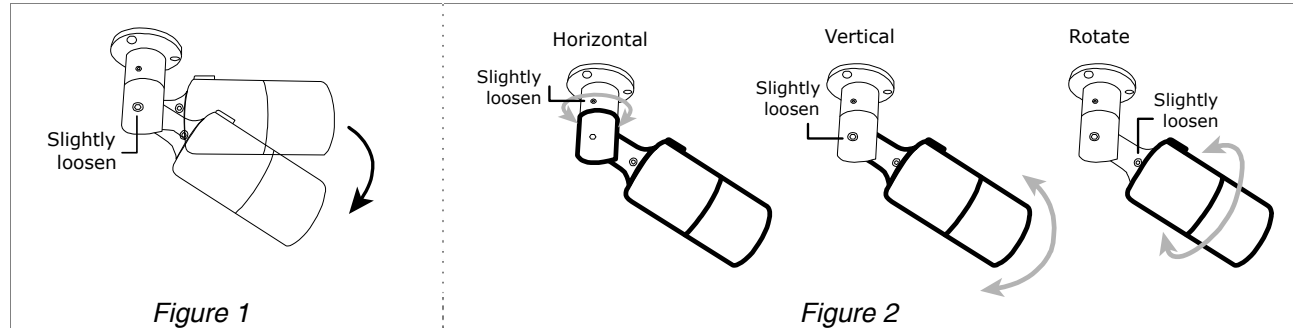


Figure 1

Figure 2

Step4: (Optional) To install a microSD card if supported, open the camera front cover, and refer to the section of "INSERT A MICRO SD CARD" for details.

Step5: (Optional) To adjust the focus and focal length if supported, open the front cover of the camera, and refer to the section of "ADJUST FOCAL LENGTH & FOCUS" for details.

Step6: Fasten the sun shield to the camera.

Note: In order to make the best performance, please adjust the angle of IR shift up and down within 30 degree respectively, left and right within 15 degree respectively.

Note: If the temperature of the installation environment is under 0°C, 50 minutes or more will be needed for the camera to warm up.

■ ADJUST FOCAL LENGTH & FOCUS - MANUALLY

FOR SELECTED VARI-FOCAL MODELS ONLY

Manually: For the vari-focal camera that its front cover could be removed.

Note: The appropriate temperature for focus adjustment is 0°C ~ 40°C, and prevent adjusting in moisture environment.

Step1: Make sure the camera power is on.

Then, with the front cover removed, remove two bags of desiccants (if any) placed in the camera.

Note: Remember where these bags were placed. New desiccants will be placed into the camera later in Step3. The desiccant is optional, only needed in certain types of IR Bullet cameras.

Step2: Find two handles on the camera as shown in **Figure 1**. Move the handle near to the main board first to find the best surveillance area, and move the hand near to the lens to adjust the sharpness of the image.

Step3: (Optional) Open the new bag(s) of desiccants supplied in the package and place them in the camera within 2 minutes (as shown in **Figure 2**), or the desiccants might absorb too much moisture in the air.

Note: If there are no spare desiccants supplied in the sales packages, please skip to Step4.

Step4: Place the front cover back and fasten it tightly.

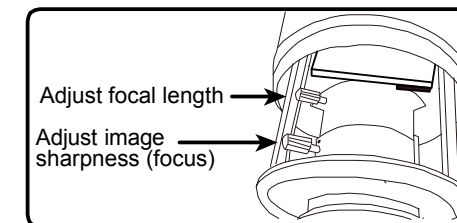


Figure 1

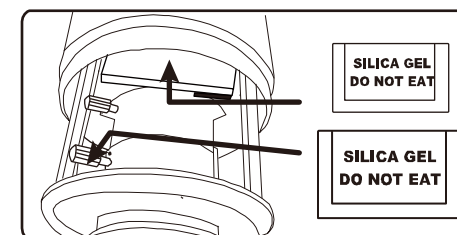


Figure 2

■ ADJUST FOCAL LENGTH & FOCUS - REMOTELY

FOR SELECTED VARI-FOCAL MODELS ONLY




Remotely: For the vari-focal camera that its front cover could **NOT** be removed.

To remotely adjust focal length and focus of the camera, access the camera from Internet Explorer.

Note: The default camera IP address is 192.168.1.10, the port number is 88, and the user name and password are both admin.

To search the IP address and port number, you could download our IP scan tool from www.surveillance-download.com/user/m359a.swf.

In the tab of "Live View", you'll see the icons in the control panel area as below:

	Zoom Tele / Zoom Wide	Click to zoom in on the image to the largest / zoom out on the image to its original size.
	Max Zoom Tilt / Max Zoom Wide	Click to zoom in / out the image.
	Focus Far / Near	Click to adjust the focus of the image.

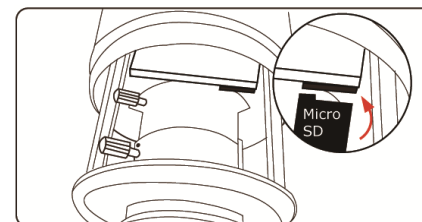
Note: You can also adjust the focal length and the focus by accessing to the NVR with PTZ controlling. For more detail, please refer to the NVR manual.

■ INSERT A MICRO SD CARD

FOR SELECTED MODELS ONLY

Step1: With the front cover removed, find the microSD card slot in the camera.

Step2: Follow the direction in the figure below to insert the MicroSD card properly:



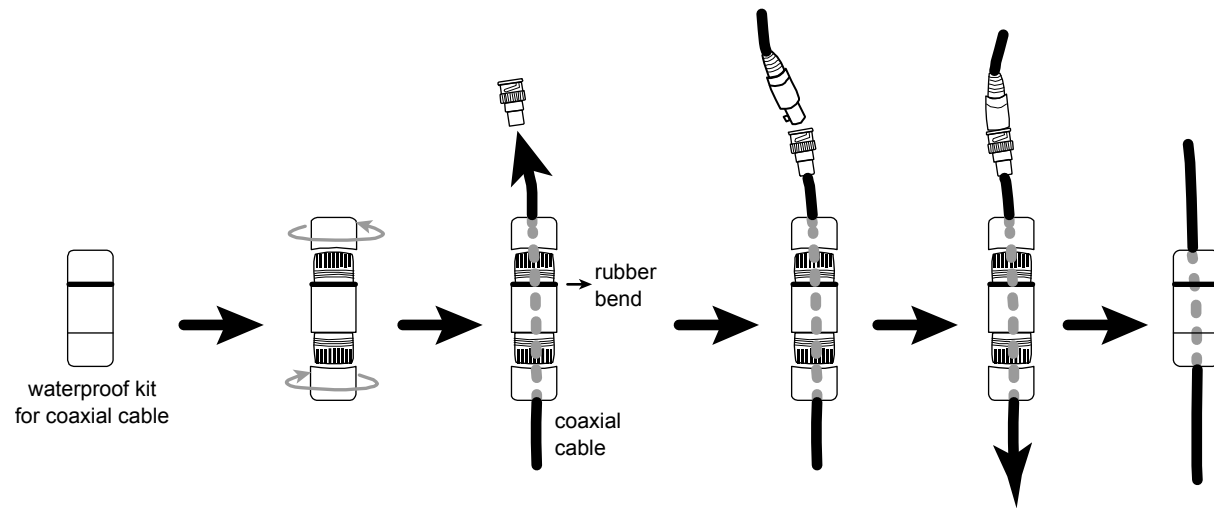
Note: It's recommended to use a pair of tweezers for inserting / removing MicroSD card.

The data originally saved in the micro SD card (if any) will be removed after inserting it to the camera.

The camera doesn't support hot-swapping. Please insert or remove the microSD card with power disconnected.

■ WATERPROOF ACCESSORIES (FOR COAXIAL CABLE)

Note: This waterproof kit is optional.



■ CABLE OVERVIEW

Cable	Description
Power cable	DC12V power supply.
Coaxial cable*	Connect it to a PoC converter for video transmission.
GND	A wire or a wire connected to a terminal block depending on the model you have, reserved for external alarm device connection.
Alarm-in**	
Alarm-out**	
RESET	A wire reserved for hardware reset. Remove the insulating coating of the wire, and twist it with the GND wire together to reset the camera to its factory values.
Line-in**	Colored as blue, used to connect to a microphone for audio input.
Line-out**	Colored as green, used to connect to a speaker for audio output.

* For selected models only

■ DEFAULT VALUES

IP address	192.168.1.10
Port number	88
User name	admin
Password	admin

It's strongly recommended to change the default user name and password before using the camera to keep your account safe.

To change the default account, log into the camera, and go to **Config** → **General** → **Account**. Create a new account, and remove the default one.

■ SYSTEM CONNECTION

FEATURES OF THIS SYSTEM

- POC (Power-over-Coaxial) solution:
 - Quick replacement from existing CCTV systems to HD IP systems, upgrading DVR to NVR, analog cameras to megapixel IP cameras, with existing cabling
 - No need to connect IP camera's power additionally for camera power is supplied by coaxial cables
- No need to configure the IP address of the connected camera since the NVR will configure automatically once the camera is connected and detected.
- When there's a power outage or malicious power cut:
 - Continuous power supply for a few minutes
 - Push Video received for power outage (Push Video NVR required)

