

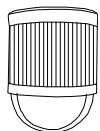
# CAMERA INSTALLATION

To check the complete user manual, scan the QR code or go to [www.surveillance-download.com/user/p571.swf](http://www.surveillance-download.com/user/p571.swf)

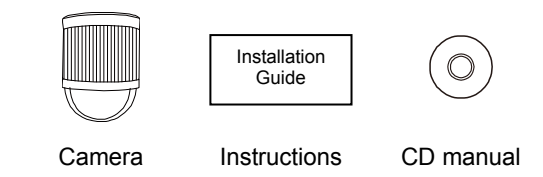
To download the free PC CMS software (CMS Lite), please check the supplied CD or go to [www.surveillance-download.com/user/p571.swf](http://www.surveillance-download.com/user/p571.swf)



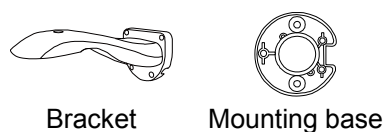
## TYPE1



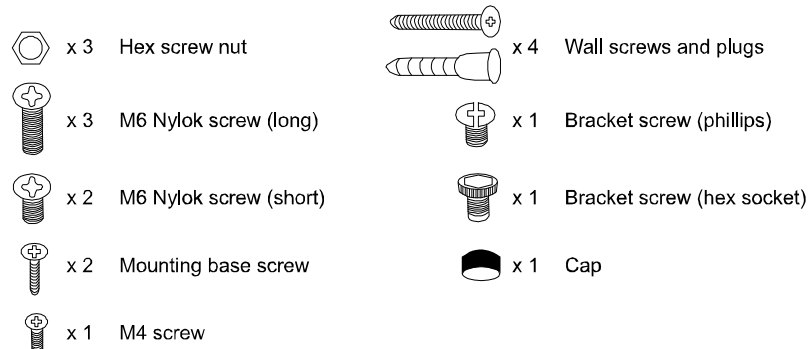
### Standard package



Below is the bracket we have to use with this camera, and it is not supplied in the camera sales package. Please purchase separately.



### The accessories:



**Note:** Here shows how to install the camera with the optional bracket mentioned on the left.

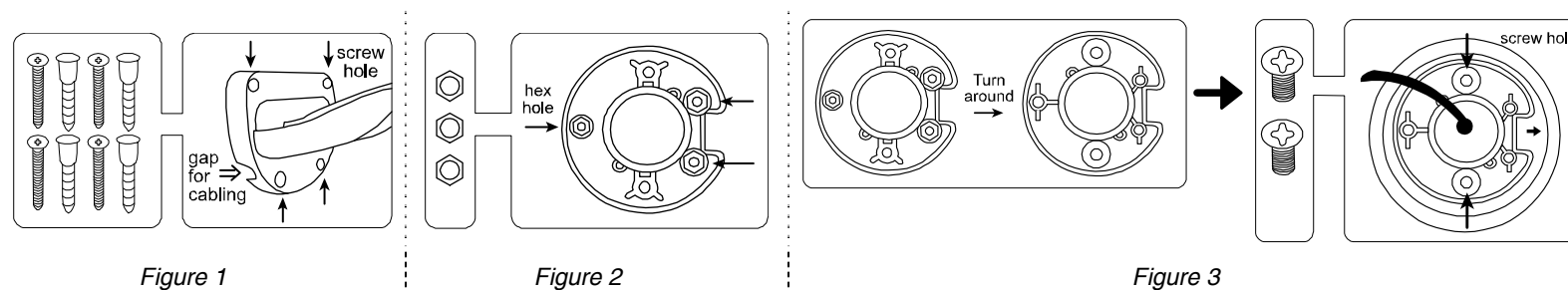
Step 1: Find the bracket and remove its upper cover, and install the bracket to the wall. Before attach the bracket to the wall, make sure how the cabling should go:

- For cabling along the wall, arrange the camera cable through one of the gaps.
- For cabling through the wall, remember to drill a hole big enough for the cable to go through.

Step 2: Fasten the bracket to the wall (*Figure 1*).

Step 3: Insert the hex screw nuts to the mounting base, and turn it around (*Figure 2*).

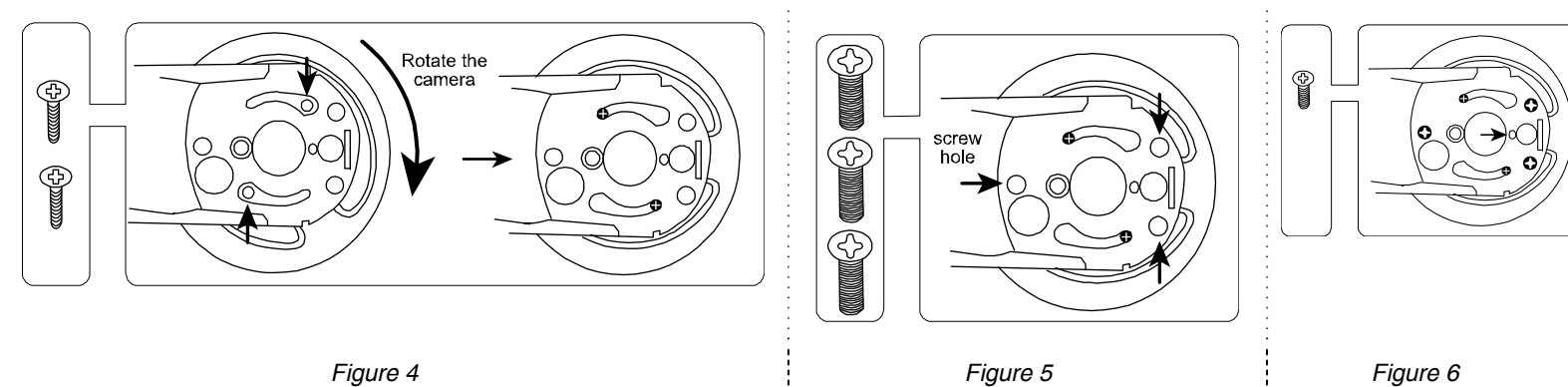
Step 4: Find "→" on the camera. Then, place and fasten the mounting base to the camera as indicated below (*Figure 3*).



Step 5: Attach and slightly fasten the camera to the bracket as indicated below. The camera is hooked (*Figure 4*).

Step 6: Slightly secure the camera and the bracket as indicated below (*Figure 5*).

Step 7: Fasten the camera to the bracket with the M4 screw as indicated below (*Figure 6*).



Step 8: Replace the upper cover of the bracket back, and fasten it with a Philips screw or a hex socket screw, and put the cap on it to finish the installation (*Figure 7*).

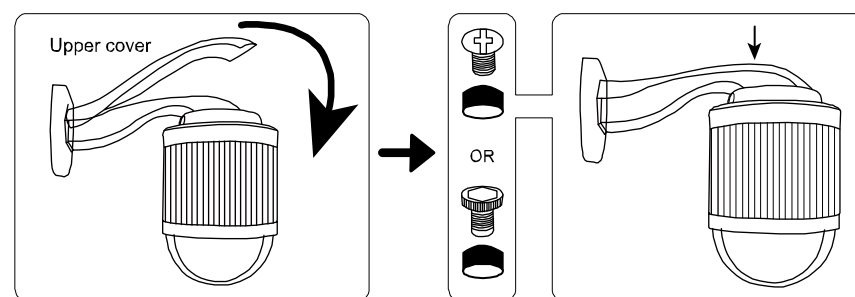
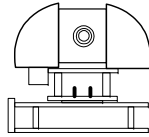
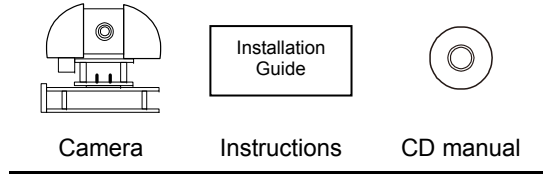


Figure 7

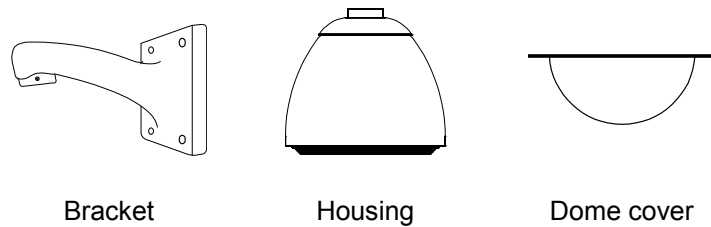
## ■ TYPE2



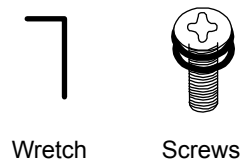
### ▼ Standard package



Below is the bracket we have to use with this camera, and it is not supplied in the camera sales package. Please purchase separately.



### The accessories:



Step 1: (Optional) Insert the microSD card if needed

Step 2: Arrange the position of the cables on the wall, pass the cables through the bracket, and secure the bracket to the wall with four screws (Figure 1).

**Note:** The four screws used to secured the bracket to the wall are not supplied in the sales package.

Step 3: Pass the camera cables through the hole in the middle of the housing (Figure 2).

Step 4: Align the screw holes of camera plate with the four screw holes on the bracket in the housing (Figure 3). Then, fix the module to the housing with the supplied four screw holes.

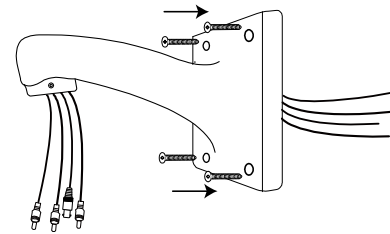


Figure 1

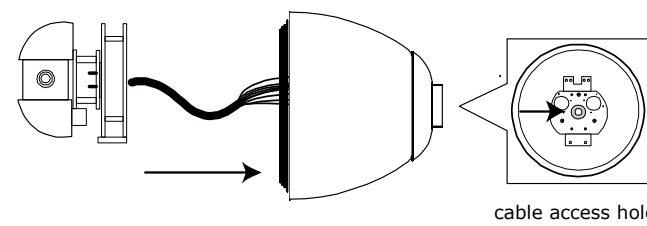


Figure 2

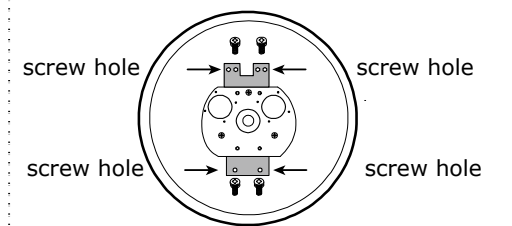


Figure 3

Step 5: Connect the cables on the wall to the cables of the camera (Figure 4).

Step 6: Collect and hide the cables in the bracket and lock the housing with the wrench to the bracket (Figure 5).

Step 7: Put the dome cover on the housing and rotate it counterclockwise to fix (Figure 6).

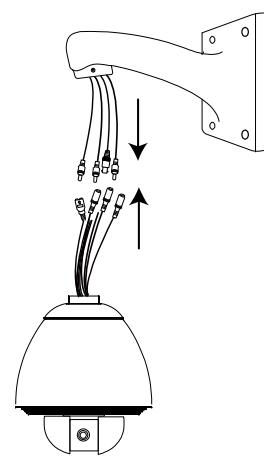


Figure 4

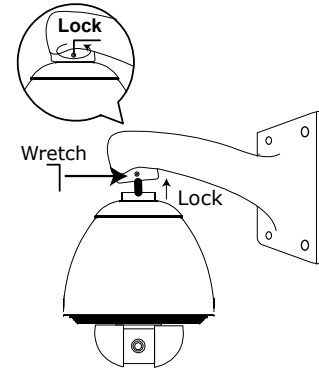


Figure 5

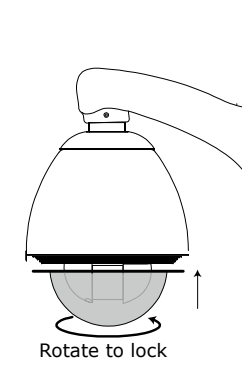


Figure 6

## ■ CABLE OVERVIEW

Cable	Description
Power cable	DC12V power supply.
Coaxial cable*	Connect it to a PoC converter for video transmission.
GND	A wire or a wire connected to a terminal block depending on the model you have, reserved for external alarm device connection.
Alarm-in**	
Alarm-out**	
RESET	A wire reserved for hardware reset. Remove the insulating coating of the wire, and twist it with the GND wire together to reset the camera to its factory values.
Line-in**	Colored as blue, used to connect to a microphone for audio input.
Line-out**	Colored as green, used to connect to a speaker for audio output.

\* For selected models only

## ■ DEFAULT VALUES

IP address	192.168.1.10
Port number	88
User name	admin
Password	admin

It's strongly recommended to change the default user name and password before using the camera to keep your account safe.

To change the default account, log into the camera, and go to **Config. → General → Account**. Create a new account, and remove the default one.

## ■ INSERT A MICRO SD CARD

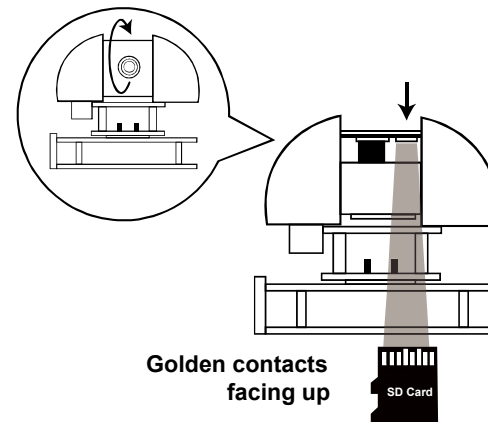
### FOR TYPE 2 ONLY

The data originally saved in the microSD card (if any) will be removed after inserting it to the camera.

The camera doesn't support hot-swapping. Please insert or remove the microSD card with power disconnected. Please follow the directions below to insert the microSD card properly:

Step1: Arrange the lens with the PCB board to find the microSD card socket as the illustration below.

Step2: Face the golden contacts up of the microSD card and insert it into the socket.



# SYSTEM CONNECTION

## FEATURES OF THIS SYSTEM

### POC (Power-over-Coaxial) solution:

- Quick replacement from existing CCTV systems to HD IP systems, upgrading DVR to NVR, analog cameras to megapixel IP cameras, with existing cabling
- No need to connect IP camera's power additionally for camera power is supplied by coaxial cables

### No need to configure the IP address of the connected camera since the NVR will configure automatically once the camera is connected and detected.

### When there's a power outage or malicious power cut:

- Continuous power supply for a few minutes
- Push Video received for power outage (Push Video NVR required)

